



GOVERNMENT OF PUDUCHERRY

# ANNUAL REPORT 2019-20



DIRECTORATE OF ECONOMICS AND STATISTICS  
PUDUCHERRY



GOVERNMENT OF PUDUCHERRY



---

# ANNUAL REPORT

---

2019-20



DIRECTORATE OF ECONOMICS AND STATISTICS  
PUDUCHERRY



**Smt. Padma Jaiswal, I.A.S.  
Secretary (Economics and  
Statistics)**

**Chief Secretariat,  
No. 1, Goubert Avenue,  
Puducherry – 605 001.**

## **FOREWORD**

I am happy to note that the Directorate of Economics and Statistics has brought out the Publication – “*Annual Report 2019-20*”. The publication elaborates the activities and achievements made by the Directorate during the year 2019-20. The Report also tabulates the Socio-Economic Indicators relating to various sectors of the Union Territory Economy which will be useful to departments implementing various welfare and development schemes. Photographs on important events are also incorporated in the Publication.

I hope that this report would serve as a reference book on the functioning of the Directorate in the Union Territory.

Suggestions for improvement are most welcome.

Puducherry,  
June, 2020.

**Padma Jaiswal, I.A.S.  
Secretary (Economics and Statistics)**



**Dr. R. RAMAKRISHNAN**  
**DIRECTOR**

**505, Kamarajar Salai,  
Puducherry – 605 013.**

## **PREFACE**

The “*Annual Report 2019-20*” is the twenty first report in its series. The Annual Report focuses not only the functional activities of the Directorate but also helps to make an assessment of the programme, activities and achievements made by the Directorate during the year under report. It also highlights the likely performance to be made in the years to come. As per the directions of the Administrative Reforms wing, Puducherry, new features viz, targets and achievements of the Directorate for year 2019-20, Budget details and reports on RTI Act are also added in this publication.

The publication also presents the selected Socio-Economic indicators pertaining to the Union Territory of Puducherry.

Suggestions, if any, to improve the publication are most welcome.

Puducherry,  
June, 2020

**Dr. R. RAMAKRISHNAN**  
**DIRECTOR**

## CONTENTS

Sl. No.	Topics	Page No.
1	Introduction	1
2	Statistical Scenario of the Union Territory	1
3	Targets and Achievements	3
4	Budget	4
5	Socio- Economic Profile of the Union Territory	5
6	Role of DES in U.T. of Puducherry	11
7	Organisation set up	11
8	Functions of the Directorate	12
9	Schemes Implemented by the Directorate	13
10	Duties and Responsibilities	14
11	Statistical Activities of the Directorate during 2018-19	17
12	Committees	30
13	Details of Workshop / Discussion / Function /Training conducted by DES, Puducherry	31
14	Statistical Publications	35
15	Activities of Statistical Cells in major Departments	38
16	Annexure-I: Roll of Directors	44
17	Annexure-II: Organization Chart	45

# ANNUAL REPORT 2019-20

## INTRODUCTION

Puducherry, a small Union Territory on the East Coast of India extends over an area of 490 Sq. Kms. It comprises of four geographically non-contiguous regions namely, Puducherry, Karaikal, Mahe and Yanam. Puducherry, the capital of the U.T., is on the east coast and south of Chennai at a distance of 162 Kms. Karaikal lies at 130 Kms. south of Puducherry. Mahe is situated near Tellicherry, geographically between Kozhikode and Kannur districts of Kerala at a distance of 850 Kms from Puducherry. Yanam is situated on the east coast geographically as an enclave of East Godavari district of Andhra Pradesh and politically forming part of the U.T. of Puducherry at a distance of 870 Kms (North) from Puducherry. The Union Territory of Puducherry (UTP) consists of two districts viz., Puducherry District comprising of Puducherry, Mahe and Yanam regions and Karaikal district comprising of Karaikal region.

## STATISTICAL SCENARIO IN THE UNION TERRITORY

With the increasing involvement of the state in welfare activities, there is a growing need for statistics in all productive activities and their presentation in a meaningful framework to facilitate decision making. This led to the creation of Directorates of Economics and Statistics (DES) in all States and Union Territories. For the purpose of co-ordination of Statistical activities of the U.T and for the promotion of Statistical standards, the Directorate of Economics and Statistics was set up in August 1957 in the U.T. of Puducherry. The main thrust of the Directorate in the initial years was to serve as a focal point of information on various subject matter fields of statistics. DES has been declared as Nodal Agency for all the statistical activities of the Union Territory of Puducherry during 1982. Since then DES is acting as the Nodal Agency and Statistical Authority for developing and managing the statistical system in the Union Territory.

The Directorate has witnessed continuous growth over the years and the responsibilities of the Directorate both in terms of scope and nature of work had increased considerably. The Statistical Science has assumed paramount importance for socio-economic planning and policy formulation in recent years. DES plays a key role in building up of a sound data base covering various sectors of the U.T economy and provides valuable inputs for planning and policy formulation. **Smt. PADMA JAISWAL, I.A.S.**, is the Secretary (Statistics) for DES. **Dr. R. RAMAKRISHNAN**,

Director, is the Head of Department and **Dr. V. ADIMOULAME**, Joint Director is the Head of Office for DES.

The functional and organizational structure of the Directorate of Economics and Statistics in the past 50 years has experienced phenomenal growth to meet the growing demands of the statistical system. Many new units have also been set up in the DES as well as in other Departments/Agencies with a view to revitalize the activities of the Directorate and for meeting the growing demands for socio-economic statistics in respect of the Union Territory. Both the delivery system and the style of functioning of the DES have been dynamically designed to offer timely and efficient information service to the user agencies. The dissemination technique has been simplified over the past decades with enormous visual aids so that any common man can understand and appreciate the basis of statistics.

The DES provides technical assistance in statistical matters to the U.T. Government and other Government Departments, viz.,

- ❖ Guidance in conduct of survey/ study.
- ❖ Population projections.
- ❖ Preparation of Statistical Publications
- ❖ Providing trained statistical manpower to other Departments/Agencies for undertaking survey/study as and when required, and
- ❖ Undertaking adhoc surveys for various Government Departments and agencies of Union Territory of Puducherry.

The DES acts under the guidance of (i) National Statistical Office, Ministry of Statistics and Programme Implementation, Government of India, New Delhi, (ii) National Sample Survey Office, Kolkata, (iii) National Buildings Organisation, New Delhi and (iv) Labour Bureau, Shimla. Also, DES keeps close liaison with various Ministries at the Centre and implements various Centrally Sponsored Schemes.

Dr. V. Adimoulame, Joint Director in the Directorate has been designated as Public Relation Officer and Public Information Officer under *RTI Act 2005* to look into the grievances of the staff and the public. Office procedure, rules and regulations as prescribed in the office manual are implemented strictly. A display board has been set up in the premises of the Directorate indicating the names of the officers and designation along with subjects dealt by them.

The DES has already published the fourth revised edition of the Citizen Charter. The DES also has a separate interactive website and all statistical information/publications/Citizen Charter/RTI particulars are also made available in the official Website of DES: <https://statistics.py.gov.in>

The population of the U.T of Puducherry as per 2011 Census was 12.47 lakhs and the Decadal Population growth rate is 28.1%. The density of population has increased from 769 persons per Sq. Km in 1961 to 2547 persons in 2011. The literacy rate has increased from 37.43% in 1961 to 85.9% in 2011.

The Quick Estimates of GSDP for the U.T. of Puducherry in 2018-19 is estimated to Rs.35,145.32 Crores at current prices. The per capita income (on the base of NSDP) for the year 2018-19 (Quick Estimates) is estimated at Rs.2,20,208/-. The sectoral composition of the GSDP at current prices in 2018-19 (Quick Estimates) indicates that the percentage share of Primary, Secondary and Tertiary sectors as 6.02%, 45.70% and 48.28% respectively.

### **TARGETS AND ACHIEVEMENTS FOR 2019-20**

Sl. No.	Targets	Achievements
1	Bringing out of Publications	The following publications were released 1. Annual Report 2018-19 2. Season and Crop Report 2018-19 3. Monthly Price Bulletin up to February, 2019 4. Puducherry at a Glance 2019
2	Release of Publications in Tamil	Price Bulletin up to February, 2019
3	Celebration of National Statistics Day	Celebrated in a fitting manner.



**BUDGET**

The details of Outlay and Expenditure during year 2019-20 are as follows:-

(Rupees in Thousands)

Sl. No.	Name of the Scheme	B.E. 2019-20	R.E. 2019-20	Actual Expenditure 2019-20	Percentage of expenditure on par with R.E. 2019-20
1	2	3	4	5	6
1	DES (State Scheme)	4,11,00	4,01,00	3,91,78	97.70 %
<b>CENTRAL SECTOR SCHEMES</b>					
2	Agriculture Census	40,00	18,51	17,58	94.99 %
3	Timely Reporting Scheme	22,00	13,27	12,96	97.64 %
4	Improvement of Crop Statistics	13,00	10,22	8,98	87.90 %
Total ...		75,00	42,00	39,52	94.10 %

(Rupees in Thousands)

6	Support for Statistical Strengthening	Amount released through PFMS	Expenditure Booked up to 2019-20
		1,99,00	87,54

**SOCIO-ECONOMIC PROFILE OF THE UNION TERRITORY OF  
PUDUCHERRY**

Item	Year	Unit	Puducherry	Karaikal	Mahe	Yanam	U.T.
Area		Sq.km	294	157	9	30	490
Density of population	2011 census	Per sq.km.	3232	1275	4646	1854	2547
Towns	"	No.	6	2	1	1	10
Statutory Towns	"	"	3	1	1	1	6
Census Towns	"	"	3	1	0	0	4
Taluks	"	"	4	2	1	1	8
Municipalities	"	"	2	1	1	1	5
Commune Panchayats	"	"	5	5	0	0	10
Community Development Blocks	"	"	2	1	0	0	3
Revenue villages	"	"	81	37	5	6	129
Revenue villages having more than half of their total population as SCs	"	"	10	0	0	0	10
Population	"	Person (%)	950289 (76.1)	200222 (16.0)	41816 (3.4)	55626 (4.5)	1247953 (100.0)
Urban	"	"	657209 (69.2)	98102 (49.0)	41816 (100)	55626 (100)	852753 (68.3)
Rural	"	"	293080 (30.8)	102120 (51.0)	-	-	395200 (31.7)
Male	"	"	468258 (49.3)	97809 (48.9)	19143 (45.8)	27301 (49.1)	612511 (49.1)
Female	"	"	482031 (50.7)	102413 (51.1)	22673 (54.2)	28325 (50.9)	635442 (50.9)
Age 0-6 population	"	"	99838 (10.5)	22263 (11.1)	4553 (10.9)	6204 (11.2)	132858 (10.6)
Decadal growth	"	%	29.2	17.2	13.5	77.2	28.1
Sex Ratio	"	Per '000 Males	1029	1047	1184	1038	1037
SC population	"	Person (%)	152406 (16.0)	35348 (17.7)	144 (0.3)	8427 (15.2)	196325 (15.7)
Urban	"	"	66782 (43.8)	10547 (29.8)	144 (100)	8427 (100)	85900 (43.8)
Rural	"	"	85624 (56.2)	24801 (70.2)	-	-	110425 (56.2)
Male	"	"	74129 (48.6)	17206 (48.7)	77 (53.5)	4100 (48.7)	95512 (48.6)
Female	"	"	78277 (51.4)	18142 (51.3)	67 (46.5)	4327 (51.3)	100813 (51.4)

Item	Year	Unit	Puducherry	Karaikal	Mahe	Yanam	U.T.
<b>DISTRIBUTION OF POPULATION BY RELIGION</b>							
Hindus	2011 census	Person (%)	855294 (90.0)	152638 (76.2)	27940 (66.8)	53537 (96.2)	1089409 (87.3)
Muslims	"	"	32674 (3.4)	28835 (14.4)	12856 (30.8)	1191 (2.1)	75556 (6.1)
Christians	"	"	58328 (6.1)	18391 (9.2)	958 (2.3)	873 (1.6)	78550 (6.4)
Sikhs	"	Person	245	46	3	3	297
Buddhist	"	"	366	63	21	1	451
Jain	"	"	1328	54	14	4	1400
Others	"	"	147	14	3	4	168
Not stated	"	"	1907	181	21	13	2122
<b>LITERACY RATE</b>							
Persons	"	%	85.4	87.1	97.9	79.5	85.8
Male	"	%	91.2	92.4	98.6	82.8	91.3
Female	"	%	79.9	82	97.3	76.4	80.7
<b>HOUSEHOLDS</b>							
Total No. of Households	2011 census	No.	230703	51219	7197	13308	302427
No. of Households without Latrine facility	"	"	72744	19742	156	2413	95055
Permanent (HH)	"	"	183147	32245	7090	11637	234119
Semi-permanent (HH)	"	"	19253	9882	77	373	29585
Temporary (HH)	"	"	26853	7642	28	1279	35802
Normal (HH)	"	"	230765	49614	7396	13790	301565
Institutional (HH)	"	"	304	63	17	9	393
Houseless (HH)	"	"	444	28	7	13	492
<b>WORKERS</b>							
Total Workers (Main and Marginal workers)	2011 census	No.	348105	68301	11802	16760	444968
Main workers	"	"	315570	58342	10404	15373	399689
Marginal workers	"	"	32535	9959	1398	1387	45279
Non workers	"	"	602184	131921	30014	38866	802985

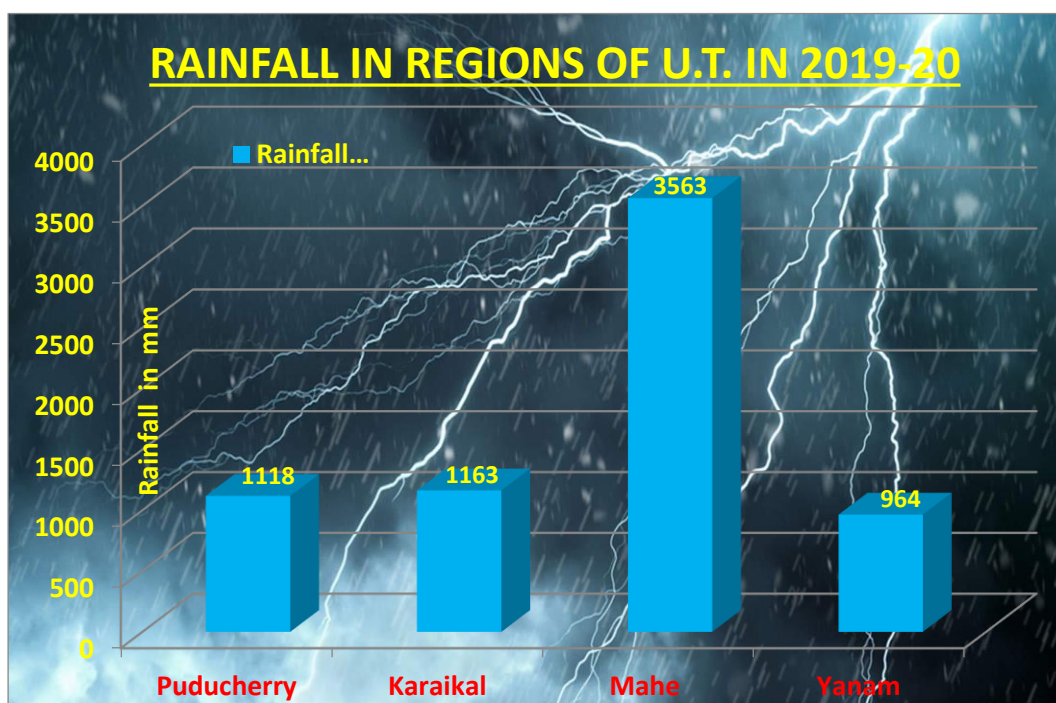
Item	Year	Unit	Puducherry	Karaikal	Mahe	Yanam	U.T.
<b>HEALTH (GOVERNMENT OF PUDUCHERRY INSTITUTIONS) #</b>							
Hospitals	2017-18	No.	5	1	1	1	8
Medical College and Hospital	"	"	1	0	1	0	2
Dental College and Hospital	"	"	1	0	0	0	1
Chest Clinic	"	"	1	0	0	0	1
Community Health Centres	"	"	2	1	1	0	4
Primary Health Centres	"	"	27	11	1	1	40
Sub-centres	"	"	56	17	4	5	82
ESI Dispensaries	"	No.	11	2*	1	1	15
Doctors (U.T. Govt)**	"	"	343	92	38	33	506
Nurses (U.T. Govt)**	"	"	768	274	85	70	1197
Beds (U.T. Govt)**	"	"	1384	506	171	100	2161
JIPMER Beds	"	"	2465	0	0	0	2465
Birth Rate	SRS 2016						13.9
Death Rate	"						7.2
Infant Mortality Rate	"						10
* 1 Part time Dispensary	** Excluding IGMC&RI and MGPGIDS						
<b>SCHOOL EDUCATION (GOVERNMENT &amp; PRIVATE) #</b>							
Primary school							
i. No. of Institutions	2018-19	No.	191	77	11	15	294
ii. No. of Students (All classes)	"	"	17874	5646	1434	1535	26489
Middle school							
i. No. of Institutions	"	No.	52	22	9	0	83
ii. No. of Students (All classes)	"	"	9590	3957	2798	0	16345
High school							
i. No. of Institutions	"	No.	120	45	7	17	189
ii. No. of Students (All classes)	"	"	38036	12121	1829	6039	58025
Higher Secondary (including Junior college)							
i. No. of Institutions	"	No.	137	23	7	4	171
ii. No. of Students (All classes)	"	"	119785	17186	4601	1365	142937
# Due to Covid-19 pandemic, the data 2019-20 is yet to be finalised. As soon as it is received, it will be uploaded in our publication (Web edition)							

Item	Year	Unit	Puducherry	Karaikal	Mahe	Yanam	U.T.
<b>TEACHER PUPIL RATIO *</b>							
Primary school	2018-19		1:18	1:15	1:25	1:16	1:18
Middle school	"		1:15	1:14	1:13	1:16	1:15
High school	"		1:11	1:11	1:08	1:11	1:11
Higher Secondary school	"		1:15	1:20	1:20	1:19	1:16
Classes I to V	"	No.	92	93	92	98	93
Classes VI to VIII	"	"	95	95	102	94	94
Classes IX & X	"	"	96	97	93	101	96
Classes XI & XII	"	"	109	123	96	119	111
All Stages	"	"	95	96	94	100	96
Anganwadi centres	"	"	661	172	13	9	855
Aadhaar cards issued (Estimated population-2016)	As on 05.08.17	"	1008471 (1108355)	207304 (220263)	43322 (45127)	45491 (78404)	1304588 (1452149)

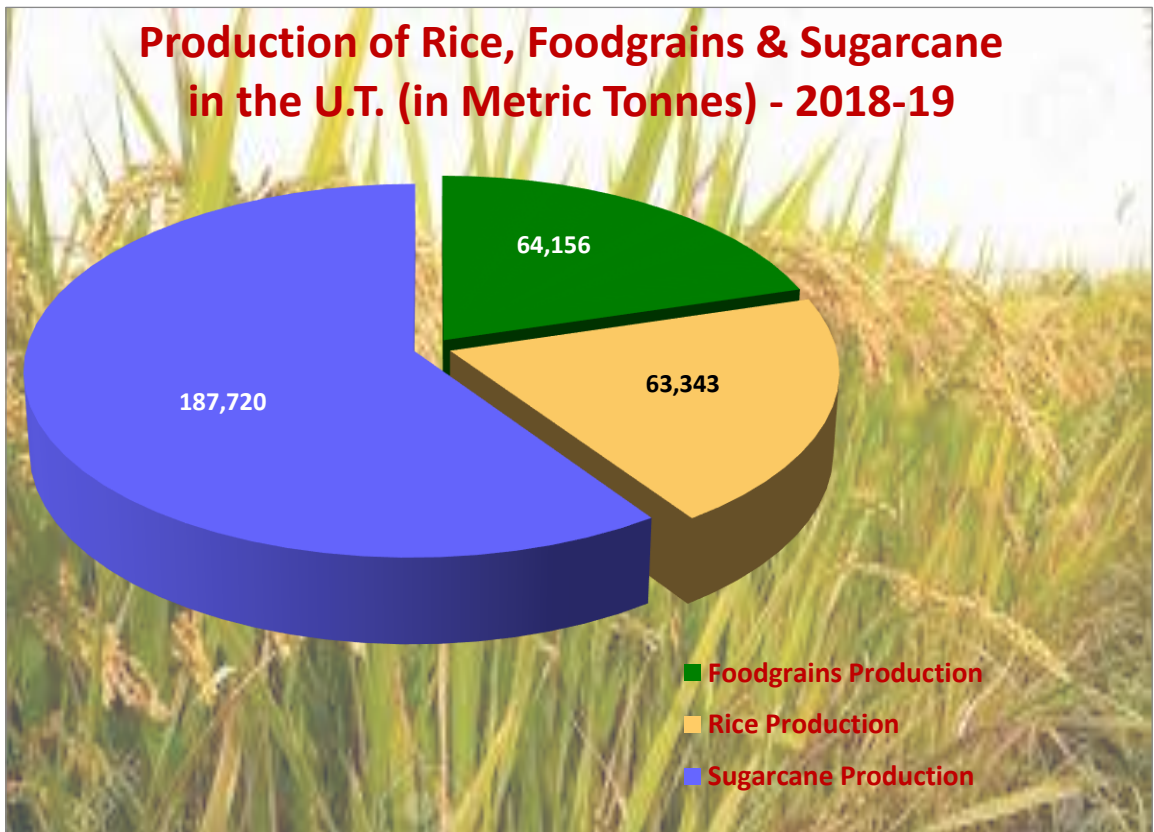
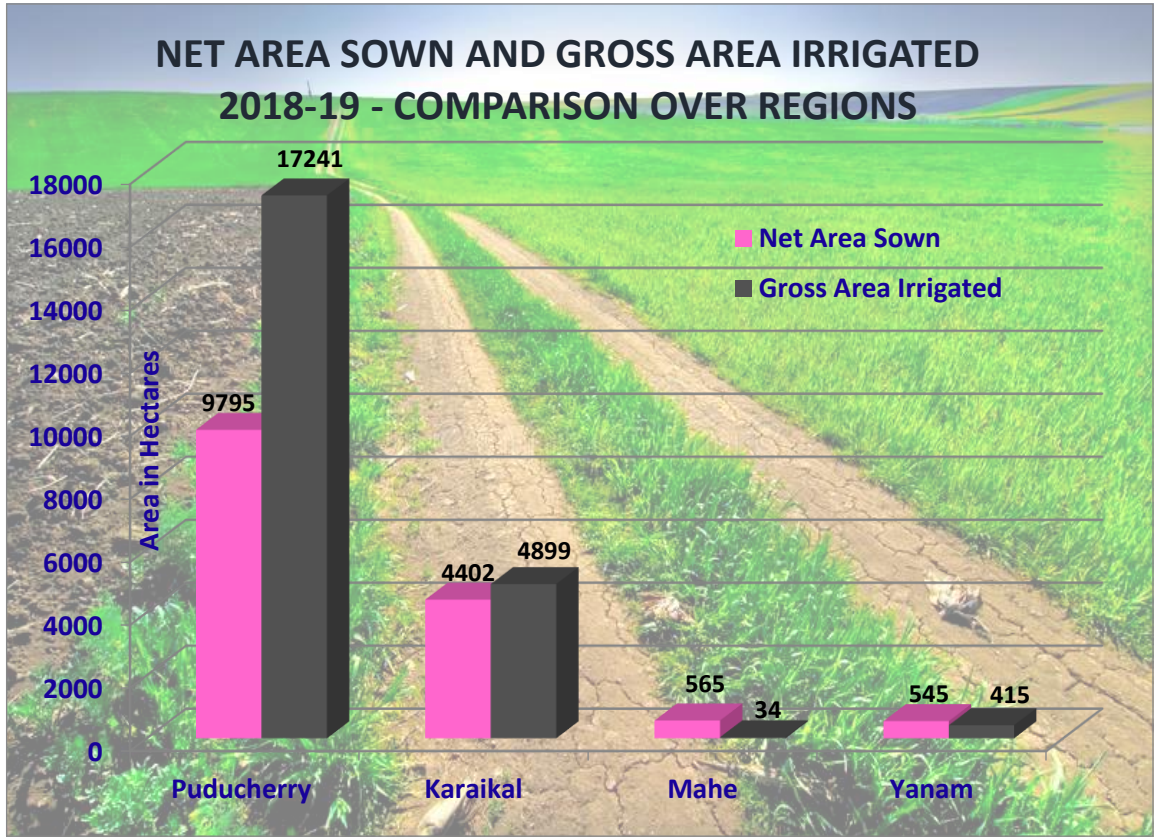
\* Due to Covid-19 pandemic, the data 2019-20 is yet to be finalised. As soon as it is received, it will be uploaded in our publication (Web edition)

**AGRICULTURE**

Rain fall	June'18 to May'19	mm	1,118	1,163	3,563	964	-
Net area sown	2018-19	Ha.	9,795	4,402	565	545	15,307
Gross area irrigated	"	Ha	17,241	4,899	34	415	22,589
Food grains Production	"	Metric Tonnes	49,581	12,675	-	1,900	64,156
Rice Production	"	"	49,141	12,308	-	1,894	63,343
Sugarcane Production	"	"	1,87,720	-	-	-	1,87,720







Item	Year	Unit	Puducherry	Karaikal	Mahe	Yanam	U.T.
<b>FISH PRODUCTION</b>							
Marine	2019	Metric Tonnes	15968.000	12295.677	5665.000	3552.750	37481.427
Inland	"	"	4041.000	866.660	-	1118.000	6025.660
<b>ANIMAL HUSBANDRY</b>							
Milk Production	2019-20	MTs.	35952	11068	315	2165	49500
Egg Production	"	in. lakh No.	73.69	35.56	2.18	2.35	113.78
<b>CIVIL SUPPLIES</b>							
Fair Price Shops	As on 31.03.2020	No.	384	91	18	22	515
Ration shops run by Co-operative institutions	"	No.	367	82	18	22	489
<b>RATION CARDS</b>							
APL (Yellow card)	As on 31.03.2020	No.	123669	30108	8131	4630	166538
<b>BPL cards</b>							
i. AAY cards	"	No.	15374	8942	44	2107	26467
ii. Red cards	"	"	120189	21801	164	9559	151713
Total BPL cards	"	"	135563	30743	208	11666	178180
All Ration cards	"	No.	259232	60851	8339	16296	344718
<b>BANKING *</b>							
No. of Scheduled Commercial Banks, PSCB, PCCLDB & RRBs/ Branches	As on 31.03.18	No.	195	50	15	11	271
Deposits	"	Rs. in crores	13205.86	1764.28	676.36	290.36	15936.86
Credit	"	"	9278.41	1698.76	306.69	206.34	11490.20
Population per Bank	Person	No.	4873	4004	2787	5057	4605
<b>TRANSPORT *</b>							
Road length (by PWD)	As on 31.03.18	km.	482.843	194.282	27.068	37.595	741.788
Total Registered Motor vehicles		No.	875845	88624	11337	5775	981581
<b>CO-OPERATION *</b>							
No. of Societies	As on 31.03.19	No.	350	82	33	45	510
Membership	As on 31.03.17	No.	478577	77510	50505	26948	633540
Primary Agricultural Credit Societies	As on 31.03.19	No.	48	6	2	0	56
Membership (PACS)	As on 31.03.17	"	123995	13098	178	0	137271
* Due to Covid-19 pandemic, the data 2019-20 is yet to be finalised. As soon as it is received, it will be uploaded in our publication (Web edition)							

Item	Year	Unit	Puducherry	Karaikal	Mahe	Yanam	U.T.
<b>STATE INCOME</b>							
Gross State Domestic product (at Current prices)	2019-20 (AE)	Rs. in crores					3,51,45.32
Net State Domestic product (at Current prices)	"	"					3,35,59.76
Per Capita Income	"	Rs.					2,20,208
<b>TOURISM</b>							
Tourist arrival	2019	No.	15,32,367	2,77,323	31,750	21,751	18,63,201
i. Foreign Tourist	"	"	1,47,422	2,281	206	10	1,49,919
ii. Domestic Tourist	"	"	13,84,345	2,75,042	31,544	21,751	17,13,282

### **ROLE OF DES IN U.T. OF PUDUCHERRY**

DES co-ordinates and controls statistical activities in the U.T of Puducherry and ensures timely generation of quality statistics and quick dissemination by optimum utilization of resources. A number of new units have also been setup in the DES mainly with a view to re-vitalise the activities of the Directorate and for meeting the growing demands for Socio-Economic Statistics in respect of the U.T. of Puducherry.

### **ORGANISATIONAL SETUP**

The Director is the head of the Directorate with the status of "Head of Department". He is assisted by three Joint Directors and three Deputy Directors with different Technical sections and establishment/Accounts Section. One Evaluation Cell is also functioning in the Directorate with one Deputy Director called as Evaluation Officer.

There is a Regional Office at Karaikal under a Deputy Director. He is provided with necessary staff to carry out the assigned duties and responsibilities. From 1996-97, Statistical Cells at Mahe & Yanam are functioning under the control of the respective Regional Administrators with the staff strength of one Statistical Inspector and 2 Field Supervisors in each Cell. The organisational chart of the Directorate is given in Annex-I. The Directorate functions as the cadre controlling authority of all statistical posts of this Administration including the matters like training, career and man power planning.



## **FUNCTIONS OF THE DIRECTORATE**

- Acting as a Nodal agency and Statistical Authority for the development of statistical system in this Territory
- Co- ordination of all statistical activities in the U.T
- Compilation, tabulation and publication of data under Annual Survey of Industries from the factories registered under the Factories Act, 1948 and publication of statistical information to assess and evaluate the changes in the growth, composition and structure of the organized manufacturing sector.
- Collection of data on industrial production from selected registered factories and preparation and publication of industrial production indices of the U.T on annual basis.
- Regular collection, compilation, analysis and interpretation of data pertaining to various sectors of the economy and dissemination of the same to user agencies.
- Estimation of Gross State Domestic Product and Per capita Income on annual basis.
- Participation in the surveys conducted by the National Sample Survey Office (N.S.S.O) on matching sample basis.
- Participation in the Employment – Unemployment Survey conducted by Labour Bureau, Shimla on matching sample basis.
- Conduct of Census of Government Employees of the State Government and Central Government, Local Bodies and Autonomous Bodies.
- Preparation of Economic–cum–Purpose Classification of the U.T. Annual Budget.
- Collection, compilation and submission of housing and building statistics to the National Buildings Organisation, New Delhi
- Dissemination of statistical information in regular/ad-hoc publications.
- Collection of weekly wholesale and retail prices of essential commodities.
- Planning and Organising the following Quinquennial censuses:
  - Agriculture Census & Input Survey and
  - Economic Census
- Supply of statistical data and information to the Central Statistical Organisation, National Buildings Organization, Labour Bureau, Other Central Government Organizations, State Directorates of Economics and Statistics, State and Central Government Departments, Quasi-Government Organizations, Private Agencies and to Research scholars as per their requirements

- To act as a storehouse of important statistics collected and maintained by the different departments of the State Government.
- Conduct of Evaluation Studies
- Under taking of Adhoc Survey for user agencies as and when required
- Functionally the DES has been organized into 11 units at the Head Quarters namely
  - ▶ Agriculture
  - ▶ Annual Survey of Industries and Index Number of Industrial Production
  - ▶ Official Statistics
  - ▶ State Domestic Product and Public Finance
  - ▶ Publication and Co-ordination
  - ▶ Training and Economic Census
  - ▶ National Sample Survey
  - ▶ Price collection and Census of Government Employees
  - ▶ Evaluation and Adhoc surveys
  - ▶ Support for Statistical Strengthening Unit
  - ▶ Electronic Data Processing and computer centre

### **SCHEMES IMPLEMENTED BY THE DIRECTORATE**

**CENTRAL SECTOR SCHEMES:** The Directorate is implementing the following Centrally Sponsored Schemes:

- 1) **Agriculture Census:** Aims at collection of quantitative information on structure of agriculture activities on quinquennial basis using the operational holding as the unit of enumeration.
- 2) **Timely Reporting Scheme:** To derive reliable estimates of area under principal crops at the end of each crop season i.e., Khariff, Rabi-I and Rabi-II and also the estimates of production of principal crops.
- 3) **Improvement of Crop Statistics:** - To improve the quality of collection of crop statistics.
- 4) **Economic Census:** Aims at collection of information from the unorganized segments of the non-agricultural sectors of the State economy on quinquennial basis.
- 5) **Support for Statistical strengthening: (Basic Statistics for Local Level Development (BSLLD and SSSP)** To strengthen the Statistical System of

the States and Union Territories of the Union of India and to ensure to improve the coverage, quality, timeliness and credibility of 20 key statistical indicators.

- 6) **Urban Statistics for HR Assessment:** Under the scheme USHA, efforts are undertaken for collection and compilation of building construction statistics in the U.T of Puducherry. Prices of building materials on quarterly basis is regularly collected from all the four regions and forwarded to NBO and U.T user agencies.

## DUTIES AND RESPONSIBILITES

### DUTIES AND RESPONSIBILITES OF THE DIRECTOR

- ❖ Director DES is the Head of the Department
- ❖ Direction, Supervision and Overall in charge of the activities of the DES and controlling officer of the Joint Director/Deputy Director/other Statistical Officials of the DES and guides them for better implementation of the statistical schemes/activities.
- ❖ Nodal Officer for all Statistical activities in the U.T of Puducherry under the collection Statistics Act -2008 and Collection of Statistics Rules 2011.
- ❖ Statistical authority for collection, compilation and dissemination of statistical information relating to various sectors of the U.T Economy through Regular/Adhoc Publications.
- ❖ Cadre control i.e Recruitment/Appointment and other related service matters of Statistical personnel in the Administration.
- ❖ Co-ordination of all statistical activities in the U.T of Puducherry.
- ❖ Provides technical guidance and advice to other statistical cells of the line departments in the administration, whenever necessary.
- ❖ Release of various statistical publications brought out by the Directorate
- ❖ Responsible for liaison with Central Statistical Office and National Sample Survey Office.
- ❖ Additional Agriculture Census Commissioner for conducting Quinquennial Agriculture Census and Input Survey.
- ❖ Additional Census Commissioner for Conduct of Economic Census
- ❖ Member Secretary of the high-level co-ordination committee for improvement of Crop Statistics.

- ❖ Member of the High-Powered Price Monitoring Cell
- ❖ Statistics Authority for Annual Survey of Industries-Residual Units
- ❖ Nodal Officer for uploading RTI progress reports
- ❖ Member Secretary of the State High Level Monitoring Committee for Support for Statistical Strengthening.

### **DUTIES AND RESPONSIBILITES OF THE JOINT DIRECTORS**

- ❖ Joint Director is the Head of Office in charge of establishment and administration.
- ❖ Overall in-charge of all statistical work done by the Statistical staff i.e., Monitoring, Inspection and Supervision of the work of the Statistical Officers, Statistical Inspectors and Field supervisors
- ❖ Assist the Director in the conduct of Review Meeting and supervision
- ❖ Assist the Director in all technical matters in the activities of Directorate of Economics and Statistics.
- ❖ Conduct of In-service Training to Statistical Officials.
- ❖ Planning & Designing and conduct of Agriculture/Economic Census/Input Survey.
- ❖ Planning & Designing and devising of formats and conduct of various adhoc surveys.
- ❖ Providing technical guidance in the preparation of State Income Estimates, Classification of the Budget, Index of Industrial Production and in the preparation of the various Publications.
- ❖ Acts as the Public Grievance Officer
- ❖ Acts as the Public Information Officer
- ❖ Acts as the Web Master for the website of DES.
- ❖ Member Secretary of the High- Level Committees.
- ❖ Member for Departmental Committee for grant of MACP to SO's, SI's and FS's.

### **DUTIES AND RESPONSIBILITES OF THE DEPUTY DIRECTORS**

- ❖ All functions relating to DDO in DES
- ❖ In charge of Accounts and audit of DES
- ❖ Preparation of the GSDP Estimates
- ❖ Overall in-charge of all statistical work done by the Statistical staff, i.e., Monitoring, Inspection and Supervision of the work of the Statistical Officers, Statistical Inspectors and Field supervisors.

- ❖ Assist the Director/Joint Director in the conduct of Review Meeting and supervision
- ❖ Assist the Director/Joint Director in all technical matters in the field of Statistics
- ❖ Conduct of In-service Training to Statistical Officials
- ❖ Conduct of Evaluation Studies
- ❖ Planning & Designing and conduct of Agriculture /Economic Census
- ❖ Planning & Designing and devising of formats and conduct of various adhoc surveys.
- ❖ Preparation of various statistical Publications
- ❖ Preparation of Price Bulletin

### **DUTIES AND RESPONSIBILITES OF THE STATISTICAL OFFICERS**

- ❖ The Statistical Officer is in-charge of the section under whom Statistical Inspectors and Field Supervisors are working.
- ❖ The Statistical Officer has to guide, supervise and co-ordinate the works relating to collection of Statistical data/estimation/preparation of reports etc.
- ❖ Furnishes Information under RTI Act.
- ❖ Web Editor for the Website of DES.
- ❖ Convening of Review Meetings.
- ❖ Assisting the Joint Director and Deputy Director in the discharge of their functions.

### **DUTIES AND RESPONSIBILITES OF THE STATISTICAL INSPECTORS**

- ❖ Collection of Statistical data on various socio-economic sectors of the U.T through field work and correspondence.
- ❖ Undertaking field visits to check and verify the data collected by the primary enumerators.
- ❖ Computation of GSDP Estimates and Index of Industrial Production.
- ❖ Collection and Compilation of Agricultural Statistics.
- ❖ Preparation of Statistical Publications.
- ❖ Preparation of Analytical Reports as and when necessary.
- ❖ Supervision of the work done by the Field Supervisors.
- ❖ Assist the Statistical officer in the conduct of various Census and Surveys.

## **DUTIES AND RESPONSIBILITIES OF THE FIELD SUPERVISORS**

- ❖ Field Supervisors are the field functionaries of the DES
- ❖ Act as primary enumerators for collection of Agricultural statistics, Agriculture Census and allied Surveys and various adhoc surveys conducted by DES
- ❖ Conduct of crop cutting experiments at the time of harvest.
- ❖ Collection of land utilization statistics as per nine-fold classification and irrigation statistics as prescribed by the Ministry of Agriculture in each village under their jurisdiction.
- ❖ Collection of statistical information on various surveys.

## **STATISTICAL ACTIVITIES OF THE DIRECTORATE DURING 2019-20**

### **COLLECTION OF AGRICULTURAL STATISTICS**

The yield statistics are collected by plot to plot enumeration method by the Field Supervisors of this Directorate in all the revenue villages in each crop season Khariff (July to October), Rabi-I (November to February) and Rabi-II (March to June) of an agricultural year (July to June).

Periodical meetings of the State Level Co-ordination Committee on Improvement of Agricultural Statistical System under the Chairmanship of Director, DES are held to discuss various issues relating to improvement in collection of Agricultural Statistics in the U.T. An annual publication entitled “Season and Crop Report” is being brought out.

Area Enumeration work for Khariff, Rabi-I and Rabi-II seasons have been successfully completed in all the revenue villages. The annual publication “*Season and Crop Report 2018-19*” has been published and hosted on the official Website.

### **AGRICULTURE CENSUS**

Agriculture Census forms part of a broader system of collection of Agriculture Statistics. The Directorate of Economics and Statistics conducts Agriculture Census in the Union Territory of Puducherry, a Centrally Sector Scheme of a Ministry of Agriculture and Farmers Welfare, Department of Agriculture, Co-operation and Farmers Welfare, Government of India. The tenth Agriculture Census 2015-16 was conducted in the Union Territory of Puducherry on complete enumeration basis in collaboration with the Revenue Department through re-tabulation of data available in the village land

records of the Revenue Department and Khasra Registers maintained by the Directorate of Economics and Statistics at the village level.

The Agriculture Census is conducted in three phases. The field work for Phase-I of 10<sup>th</sup> Agriculture Census 2015-16 in respect of the U.T. of Puducherry was completed. Based on the L-1, L-2 and L-3 schedules, Table-1 was prepared for the Union Territory as a whole. In Phase-II, detailed information on aspects such as tenancy, land use, irrigation, cropping pattern of all the operational holdings have been collected. This Directorate has successfully completed the 10<sup>th</sup> Agriculture Census and all the tables were validated and finalized and the approval of Government of India was obtained. Based on the final tables, preparation of “*Report on Agriculture Census 2015-16*” is under progress.

### **INPUT SURVEY:**

Input Survey is a follow-up survey of the Agriculture Census. Agriculture Census is conducted in three phases viz., I Phase (Main Census), II Phase (H-Schedule) and III Phase (Input Survey). The ninth Input Survey was conducted with 2016-17 as the Reference year as the follow-up- of Agriculture Census 2015-16 in the U.T. of Puducherry.

Under the Input Survey 2016-17, information has been collected according to five size-groups of operational holdings. There are 129 revenue villages in the U.T. of Puducherry, in which 10% of sample villages (13 villages) have been selected (8 villages in Puducherry Region, 3 villages in Karaikal Region and each one village in Mahe and Yanam Region). This Directorate has successfully completed the Input Survey 2016-17 and all the tables were validated and finalized and the approval of Government of India was obtained. Based on the final tables, preparation of “*Report on Input Survey 2016-17*” is under process.

### **TIMELY REPORTING SCHEME (TRS)**

The scheme is intended to provide timely and reliable estimates of area under major crops just after the sowing operation is completed. Area estimates of principal crops for all crop seasons of 2019-20 are sent periodically to the Ministry of Agriculture, New Delhi. Progress report regarding the operation of TRS is being sent periodically to the Ministry of Agriculture, New Delhi.



## **IMPROVEMENT OF CROP STATISTICS (ICS)**

The Directorate of Economics and Statistics and NSSO make joint efforts for locating deficiencies in the system of collection of crop statistics in the Union Territory and suggest remedial measures under the scheme for improvement of crop statistics. The Sample check is carried out on a matching basis by the NSSO and the Directorate of Economics and Statistics to improve the quality of crop production statistics.

Area enumeration check has been carried out in 21 (TRS) villages in the U.T. of Puducherry except Mahe region. This Directorate has provided technical support and guidance to Agriculture Department Staff to conduct Crop Cutting Experiments in Puducherry and Karaikal regions for all three seasons of 2019-20 respectively. Two days Refresher Training to the primary workers and the supervisory staff of DES and Village Level Workers of Agriculture Department, Puducherry and Karaikal, for conducting crop cutting experiments for Paddy was given by the Superintendent, NSSO (FOD) Puducherry, during 23<sup>rd</sup> and 24<sup>th</sup> September, 2019 at Karaikal and 26<sup>th</sup> and 27<sup>th</sup> September, 2019 at Puducherry. Joint inspection of area enumeration check by members of District Level Committee was also carried out.



Dr. R. Ramakrishnan, Director, DES, Puducherry inspecting the Crop Cutting Experiment at Manaveli village.





Refresher Training Programme on Crop Estimation Survey conducted during 26<sup>th</sup> and 27<sup>th</sup> September, 2019. From the left Dr. Ramakichenin@Bala Gandhi, Director, Dept. of Agriculture and FW, Puducherry, Dr. R. Ramakrishnan, Director, DES, Puducherry, Shri P. Ravivarma, Assistant Director, NSO-FOD, Puducherry.



Dr. R. Ramakrishnan, Director, DES, Puducherry delivering his keynote address during the Refresher Training on Crop Estimation Survey conducted at Karaikal during 23<sup>rd</sup> and 24<sup>th</sup> September, 2019. In the chair from the left: Shri J. Senthilkumar, Additional Director (Incharge), Dept. of Agriculture and FW, Karaikal, Shri P. Ravivarma, Assistant Director, NSO-FOD, Puducherry and Shri S. Rathinavelu, Deputy Director (Incharge), Regional Office, DES, Karaikal.

### **CROP ESTIMATION SURVEY (CES)**

The objective of crop estimation survey is to obtain in a scientific manner through conduct of crop cutting experiments reliable estimates of average yield per hectare and production of rice at State level with reasonable degree of precision.

### **ANNUAL SURVEY OF INDUSTRIES (ASI)**

The Annual Survey of Industries (ASI) is the principal source of industrial statistics. It is conducted every year to provide information on the changes in the growth, composition and structure of organised manufacturing (factory) sector which relates to manufacturing processes, repair services, generation, transmission of electricity, gas and water supply undertakings and cold storage. The survey is conducted under the statutory provisions of the Collection of Statistics Act 1953 and Collection of Statistics (Central Rules) Rules 1959. It covers only those industries registered under sections 2m (i) and 2m (ii) of the Factories Act 1948. The field work is conducted by the Field Operation Division (FOD) of NSSO. The Directorate of Economics and Statistics, Puducherry covers the residual units of ASI from the year 2017-18 onwards. Pooling of central and State level ASI data for publishing district level estimates for the year 2016-17 has successfully been completed for the first time in the history of this Directorate and the publication of the pooled data is under process.

### **INDEX OF INDUSTRIAL PRODUCTION (IIP)**

The Directorate of Economics and Statistics, Puducherry is preparing the Index of Industrial Production for every year based on the methodology supplied by the Industrial Statistics Wing, Central Statistics Office, Ministry of Statistics and Programme Implementation, Government of India, Kolkata is the indicator of industrial growth of the State Economy. For compilation of State Index of Industrial Production, production data from the selected factories are being collected for the year 2018-19 and 2019-20.

### **PRICE STATISTICS**

The price section of this Directorate is responsible for the collection of wholesale and retail prices of essential commodities on weekly basis from Puducherry, Karaikal, Mahe and Yanam markets. These data are presented in the form of monthly publication

viz. “Price Bulletin” in English and Tamil. Based on the data collected, various reports have been prepared and sent to Reserve Bank of India, Labour Bureau, Shimla and Local Government Departments. Since Puducherry has been selected as one of the centres for computation of All India Consumer Price Index Number (CPI) for Industrial workers, the price quotations collected every week are forwarded to the Labour Bureau, Shimla.

This Directorate had undertaken quick surveys on weekly and monthly basis on the post-GST scenario in terms of sales experienced by the traders in Puducherry region of the Union Territory of Puducherry and monthly/weekly reports were submitted to Finance Department.

### **STATE DOMESTIC PRODUCT (SDP)**

State Income is one of the important indicators of economic growth of a State and it helps to study the impact of various development activities implemented by the State on the economy. The State income estimates are computed both at current and constant prices. The State income at current prices reflects nominal growth of the economy whereas the State income at constant prices reflects the real growth of the economy. The per capita income is used to determine both the absolute and relative performance of the economy of Puducherry with that of the other states and U.Ts. It is used by policy makers as an important indicator to measure the regional disparities and allocate Plan resources.

### **OFFICIAL STATISTICS**

The Directorate is collecting data from various Departments of this Administration relating to the subjects like public health, vital statistics, education, joint stock companies, co-operation, labour and employment, industry, transport and communication, trade, police and crime, excise, plan expenditure, entertainment, life insurance, tourism, civil supplies, fisheries, banking, elections, fuel and power social welfare and etc. The collected data are presented in various publications brought out by the Directorate.

### **CENSUS OF GOVERNMENT EMPLOYEES**

This Directorate is conducting Census of Government Employees with the aim of assessing the volume of employment in the public sector and other related information



such as pay and emoluments of State/Central Government employees and a Report on Census of Government Employees is brought out on annual basis.

### **NATIONAL SAMPLE SURVEY**

The National Sample Survey Office conducts multi-subject surveys and provides a sound data base for planning and policy formulation. The NSSO covers different subjects of importance such as employment and unemployment, consumer expenditure, land-holdings, livestock enterprises, debt and investment, social consumption, demography, morbidity and disability etc., through household surveys. The Socio-Economic surveys are carried out in the form of rounds, the period of a round being normally one year, in certain cases it may vary six months to one year, in certain cases it may vary six months to one year.

The enumeration work of 77<sup>th</sup> Round has been completed and the supervision work is under progress. During the current year 2019-20, 78<sup>th</sup> Round is in progress under the subject “*Domestic Tourism Expenditure and Multiple Indicator Survey*”. The data collection on the subject will be closed by December, 2020.



Officials of DES, Puducherry conducting the socio-economic survey of National Sample Survey 77<sup>th</sup> Round on “*Land and Livestock Holding of Households and Situation Assessment of Agricultural Households and Debt and Investment*” at Mahe region.

## **TRAINING**

In pursuance of the recommendations of the Third Conference of the Central and State Statistical Organisations held at New Delhi, a training unit was set up in DES in 1980. The basic aim of the training scheme is to make the primary/intermediate level statistical personnel conversant with the concepts, definitions and terminology of different subjects such as statistics, mathematics, economics and official statistics so as to improve the efficiency and ensure production of good quality of data. DES imparts in-service training to the officials of this Directorate periodically.

## **SUPPORT FOR STATISTICAL STRENGTHENING (SSS) - CENTRAL SECTOR SCHEME**

*India Statistical Strengthening Project (ISSP)*, a world Bank funded Project, now renamed as ‘*Support for Statistical Strengthening (SSS)*’, which is now Central Sector Scheme aims to strengthen State Statistical Systems by way of providing adequate technical and financial support to improve their statistical capacity and infrastructure for collecting, compiling and disseminating reliable official statistics for policy planning purposes particularly at the state and sub-state levels. With the above primary objective, the SSS could also be perceived as a scheme aimed to act as a catalyst in facilitating implementation of National Strategic Statistical Plan (NSSP) for meeting growing data requirements both at national and international levels.

The scheme “Support for Statistical Strengthening (SSS)” is now a Central Sector Scheme with 100% funding from the Central Government.

The main objectives of the Scheme are:

- a. To strengthen the Statistical System of the States and Union Territories (UTs) of the Union of India; and
- b. To ensure to improve the coverage, quality, timeliness and credibility of 20 key Statistical Indicators.

## **EXPECTED OUTCOMES UNDER SSS**

Once SSS is implemented, it is expected that there would be a significant improvement in the credibility, timeliness and reliability of state /sub state level data / statistical products and therefore in turn the national level data particularly in respect of the 20 core key identified statistical indicators including improvement in terms of adherence to prescribed statistical standards.

In addition, SSS is also expected to improve and catalyze the process of generating data required for planning, monitoring and reviewing various development schemes including different flagships schemes of the Government. It is also expected to eventually stimulate development of a sound objective data / information based decision support system at both the National and sub-national levels.

The proposal of the Directorate of Economics and Statistics, Puducherry consists of the following statistical activities which have been prepared in consultation with the Support for Statistical Strengthening (SSS) unit of MoSPI and are proposed to be undertaken in the U.T of Puducherry. The activities listed below are prepared with a view to plug the data gaps in the compilation of 20 core statistical indicators.

Sl No	Item
1	Business Register Preparation
2	Generation of Consumer Price Index Number and Whole sale Price Index Number
3	Estimation of District Domestic Product
4	Compilation of Monthly Index of Industrial Production
5	Crop Estimation Surveys
6	Local Body Accounts Compilation
7	Survey on Local Level Area Statistics
8	Capital Formation and Savings Estimation
9	Survey on Private Medical Institutions/Hospitals/Clinics/Medical Labs
10	Compendium on Disaster Management Statistics
11	Survey on Private Educational Institutions/tuition centres (both recognized/unrecognized)
12	Survey on Animal Husbandry Statistics (Dairy & Poultry)
13	Compilation of Housing Statistics
14	Compendium of Environmental Statistics
15	Preparation of Integrated Data base of line Departments
16	Survey on Transport sector
17	Conduct of surveys on Medical Tourism, Pilgrimage Tourism and Education Tourism
18.	Development of Indicators for Sustainable Development Goals Monitoring

In order to implement the above activities, the Ministry of Statistics and Programme Implementation, Government of India, sanctioned for releasing an amount of Rs.8.05 Crores in 3 years period from and the amount will be released in 3 installments in the ratio of 25:50:25. The first installment has been released.

## **EVALUATION CELL**

Plan formulation, Plan Implementation and Plan Evaluation form a sequence of planning process. Evaluation results provide the required input for assessing the performance capacity using the information as guide for improved policy/programme/project planning.

## **PUBLICATION**

The Publication section of this Directorate is in-charge of collection, compilation, analysis and presentation of the official data in the Statistical Publications (1) Puducherry at a Glance (2) Abstract of Statistics and (3) Statistical Handbook issued by the Directorate. To make the publications user friendly, a set of illustrative charts have also been incorporated in the publications.

During 2019-20, the following publications were brought out by this Directorate:

- 1) Annual Report - 2018-19
- 2) Statistical Handbook 2017-18
- 3) Monthly Price Bulletin upto March, 2019
- 4) Puducherry at a Glance 2019 and
- 5) Season and Crop Report 2018-19

## **COMPUTER CENTRE**

DES has a full-fledged computer unit which is utilized by all sections of the Directorate for storage, retrieval and generation of various reports. Over the years, the Computer Centre has undertaken computing jobs for processing voluminous data varying widely in structure and content. It has shouldered the responsibility of processing the various Census data such as Economic Census, Livestock Census etc, data of various adhoc surveys conducted by the DES. Apart from sponsoring the officials for various computer training programmes conducted by the CSO, the officials were given proper training in office automation also.

Web Board has been constituted for periodical management of the website of the Directorate of Economics and Statistics with the Joint Director (I) as Web Master. The Web Board functions under the overall supervision of the Director.



Statistical System of the U.T has already been modernized via Computer in the matter of rapid collection of data and quick tabulation and analysis. Computing resources of the Directorate were strengthened by proper maintenance and upgradation of computer systems and accessories in the DES. Hence, up-to-date data is available in the digital format maintained by the Directorate.

A dedicated website for DES, Puducherry has been designed with the help of NIC, Puducherry and hosted through National Portal viz., <http://statistics.py.gov.in>. DES has also obtained VPN access through NIC, Puducherry for content updating directly from DES. The statistical information and the publications are available in the official Website of DES [https:// www.statistics.py.gov.in](https://www.statistics.py.gov.in)

### **CELEBRATION OF “STATISTICS DAY”**

In recognition of the notable contribution made by (late) Prof. Prasanta Chandra Mahalanobis in the fields of planning and statistical development in the post-independent era, the Government of India has declared 29<sup>th</sup> June of every year as the National Statistics Day, coinciding with the birth anniversary of late Prof. P.C. Mahalanobis. The objective of this day is to create awareness among the people especially the younger generations for drawing inspiration from (late) Prof. Mahalanobis about the importance of statistics in socio-economic planning and policy formulations.

The Directorate of Economics and Statistics, Puducherry celebrates *Statistics Day* on 29<sup>th</sup> June every year. The 13<sup>th</sup> Statistics Day, with theme ‘*Sustainable Development Goals (SDGs)*’, was celebrated by DES on 29<sup>th</sup> June, 2019 and publications were brought out by Hon’ble Minister for Statistics, Government of Puducherry.



The Publications '*Puducherry at a Glance 2019*' and '*Annual Report 2018-19*' being released by Hon'ble Minister for Statistics, Puducherry on National Statistics Day, 2019. From the Left : Hon'ble Minister for Statistics, Puducherry, Shri. Ashwani Kumar, I.A.S., Chief Secretary to Government, Government of Puducherry, Dr. R Ramakrishnan, Director, DES, Puducherry and Shri. N. Sundaramurthi, Joint Director (Retd.), DES, Puducherry.



The Publication '*Monthly Price Bulletin*' being released by Hon'ble Minister for Statistics, Puducherry on National Statistics Day, 2019. From the Left : Hon'ble Minister for Statistics, Puducherry, Shri. Ashwani Kumar, I.A.S., Chief Secretary to Government, Government of Puducherry, Dr. R Ramakrishnan, Director, DES, Puducherry, Shri. N. Sundaramurthi, Joint Director (Retd.), DES, Puducherry and Shri S. Pacquirissamy, Deputy Director, DES, Puducherry

## **COMMITTEES**

To bring out an effective co-ordination/co-operation between the DES and other Departments, Co-ordination Committees have been constituted.

1. A High-Level Co-ordination Committee for Improvement of Crop Statistics with Secretary (Economics and Statistics) as Chairman and Director, DES as Member Secretary. The Committee meets once in a year.
2. State Level Co-ordination Committee on ASI with Secretary to Government (Economics and Statistics) as its Chairman / Chairperson Meeting of the Committee is convened once in two years.
3. A Steering Committee has been formed as directed by the Economic Census Division, Central Statistical Organisation, New Delhi with the Secretary (Economics and Statistics) as Chairman and Census Commissioner and the Director, DES as Additional Census Commissioner for the conduct of Economic Census.
4. State Co-ordination Committee for Monitoring and Co-ordinating the work related to Agriculture Census in the Union Territory of Puducherry was constituted as directed by the Ministry of Agriculture, Government of India, New Delhi with Secretary (Economics and Statistics) as Chairman. Further Secretary (Economics and Statistics) is the State Agriculture Census Commissioner for the conduct of the Agriculture Census, a Centrally Sponsored Scheme implemented by the Department of Agriculture and Co-operation, Ministry of Agriculture, Government of India.
5. A State High-level Steering Committee has been constituted to monitor the Project ISSP in the U.T. of Puducherry with the Chief Secretary as Chairman and the Secretary (Eco & Stat), as Co-Chairman, and the Director (Statistics) as Member Secretary, Representatives from the Pondicherry University and Representative of the Ministry of Statistics and Programme Implementation, Representative of the National Sample survey Organisation are included as members for the purposes of ISSP vide G.O.Ms. No. 52/F2/2010 dated 01.11.2010.

**DETAILS OF WORKSHOP / DISCUSSION / FUNCTION/ TRAINING**  
**CONDUCTED BY THIS DIRECTORATE DURING 2019-20**

Sl. No.	Title of the Meeting/Discussion/ Training / Workshop/ Conference	Day / Duration
1	National Statistics Day, 2019	29-06-2019
2	Training on Endline Survey	27-08-2019
3	Refresher Training Programme on Crop Estimation Survey at Karaikal	23-09-2019 to 24-09-2019
4	Refresher Training Programme on Crop Estimation Survey at Puducherry	26-09-2019 to 27-09-2019
5	Methodology workshop on Crop Estimation Survey at PAJANCOA & RI, Karaikal	17-02-2020



Smt. Padma Jaiswal, I.A.S., Secretary (Economics and Statistics), Government of Puducherry, inaugurating the Methodology workshop on Crop Estimation Survey under SSS Scheme held at Pandit Jawaharlal Nehru College of Agriculture and Research Institute, Karaikal on 17-02-2020.  
 On the left: Dr. R. Ramakrishnan, Director, DES, Puducherry.





Participants attended the Methodology workshop on Crop Estimation Survey under SSS Scheme held at Pandit Jawaharlal Nehru College of Agriculture and Research Institute, Karaikal on 17-02-2020.



Training programme on Compilation of Sub-State Level Consumer Price Index Numbers held at DES, Puducherry during 17<sup>th</sup> and 18<sup>th</sup> June, 2019. From the left: Dr. R. Ramakrishnan, Director, DES, Puducherry, Smt. Padma Jaiswal, I.A.S., Secretary (Economics and Statistics), Government of Puducherry, Shri Rakesh Kumar, Director (PSD), CSO, New Delhi and Shri N. Sundaramurthi, Joint Director (Retd.), DES, Puducherry.



Training on End-line Survey on Knowledge, Attitude and Practice of Citizens 2019 conducted on 27<sup>th</sup> August, 2019. From the left: Dr. R. Ramakrishnan, Director, DES, Puducherry, Smt. Padma Jaiswal, I.A.S., Secretary (Economics and Statistics), Government of Puducherry and Dr. L. Kumar, Additional Chief Electoral Officer, Puducherry.



Dr. R. Ramakrishnan, Director, DES, Puducherry delivering his welcome address in the training programme on . Endline Survey on Knowledge, Attitude and Practice of Citizens 2019 conducted on 27<sup>th</sup> August, 2019. From the left: Smt. Padma Jaiswal, I.A.S., Secretary (Economics and Statistics), Government of Puducherry, Dr. L. Kumar, Additional Chief Electoral Officer, Puducherry and Shri B. Thillaivel, Deputy Chief Electoral Officer, Puducherry

### **Right to Information Act :-**

Under the Right to Information Act 2005, 17 manuals have been prepared and Web-hosted. DES consists of three regional offices at Karaikal, Mahe and Yanam and the details of Public Information Officers appointed for dealing with RTI Act in DES are as follows: -

Joint Director I	: Public Information Officer (Puducherry Region)
Joint Director II	: Transparency Officer
Joint Director III	: Public Information Officer (Mahe and Yanam Regions)
Deputy Director I	: Assistant Public Information Officer (Puducherry Region) and
Deputy Director (Karaikal)	: Public Information Officer (Karaikal Region)

Under the Right to Information Act, DES received a total number of 10 applications during the year 2018-19 and 9 applications were disposed and 1 application was forwarded to the Public Information Officer concerned of other Department. There are no cases of information denial during the year 2018-19. A display board incorporating the names of PIOs and Appellate Authority has also been kept in the premises of the DES, Puducherry. Quarterly reports (up to March 2019) have been uploaded in the web portal of Central Information Commission, New Delhi. Monthly reports are also uploaded in the website of the Directorate as per the instructions of the Ministry of Home Affairs, New Delhi.

Director, DES has been appointed as the Nodal Officer for uploading RTI returns of all Government Departments. The website is regularly monitored and updated in co-ordination with the departments concerned.

### **CITIZEN CHARTER**

Citizen charter for the DES has been prepared and uploaded in the Website of this Directorate <https://www.statistics.py.gov.in>



## **STATISTICAL PUBLICATIONS**

In recent years, there is a growing demand for statistics on all socio-economic aspects of the State and also for presentation of such statistics in a meaningful framework. The effectiveness of the Statistical System in a State depends upon the efficiency in the collection and compilation of statistics with high standard of reliability and making them available to users in time. Hence, the Directorate has enlarged its activities not only to cater to the needs but also to stimulate wider user fields. Directorate is making consistent efforts to gain the respect and confidence of Politicians, Bureaucrats and the Public by presenting up-to-date validated statistical data in the publications. The Publications of the Directorate also aim at providing important statistics which are generally required for economic analysis.

### **ABSTRACT OF STATISTICS (ANNUAL)**

It is the most comprehensive publication of the DES and serves as an important source material for statistical time series data of different aspects of the Union Territory of Puducherry. The Publication gives region-specific micro-level data on Area and Population, Rainfall, Agriculture, Livestock, Fisheries, Industries, Power, U.T Budgetary details, Finance and Banking, Co-operative Societies, Joint Stock Companies, Social Welfare, Tourism, Insurance, Prices, State Domestic Product, Police and Crime, Education, Public Health and Vital Statistics, Housing and Five-Year Plans.

### **ANNUAL SURVEY OF INDUSTRIES (ANNUAL)**

The ASI report presents data on salient characteristics of industries like extent of investment, employment, input, output, labour cost, value added etc., and gives a descriptive account of the industrial structure of the U.T. of Puducherry. The ASI data provides statistical information to assess and evaluate objectively and realistically the changes in the growth, composition and structure of the organized industrial sector. It also provides comprehensive, factual and systematic basis for formulation of industrial policy. It gives the contribution of the organized industrial sector to the State Domestic Products of the U.T. of Puducherry.



### **BUDGET IN BRIEF (ANNUAL)**

The publication presents the Budgetary details in a simple form and vividly highlights the fiscal activities of the State highlighting the comparative growth in the Revenue receipts and Expenditure of the State.

### **BUDGET AND ECONOMIC-CUM-PURPOSE CLASSIFICATION (ANNUAL)**

Various items of Revenue and Expenditure of the State regrouped and reclassified into meaningful economic and purpose categories to facilitate better understanding of the economic aspects of Government transactions are presented in the publication.

### **CENSUS OF GOVERNMENT EMPLOYEES (ANNUAL)**

The Report contains statistics on Employees of Puducherry State Government / Central Government / Local Bodies and Autonomous Institutions and helps to assess the volume of employment and related information in the Public Sector.

### **ECONOMIC CENSUS (QUINQUENNIAL)**

Economic Census is the complete count of all establishment located within the geographical boundary of India. The Economic Census provides disaggregated information on various operational and structural variables of all establishments of the State. The information collected during Economic Census are useful for socio-economic developmental planning at State and district level.

So far six Economic Censuses were conducted by the Directorate of Economics and Statistics, Puducherry under the guidelines of the Ministry of Statistics and Programme Implementation, Government of India. Based upon learning of previous Economic Censuses, the Government of India has proposed to conduct the 7<sup>th</sup> Economic Census in 2019 with advanced ICT tools and applications.

## **INDEX NUMBER OF INDUSTRIAL PRODUCTION (ANNUAL)**

Index of Industrial Production prepared and published annually by the DES is the most up-to-date indicator of industrial growth of the U.T. of Puducherry. It is also used by the Planners for framing policies and programmes.

## **PUDUCHERRY AT A GLANCE (ANNUAL)**

This publication presents the selected Statistical data covering the important selected socio-economic aspects of the U.T. of Puducherry.

## **PRICE TREND**

Price Statistics published by the DES is an important publication pertaining to the economy. The price data utilised by official agencies can be divided into two broad categories, viz,

- i) Regulatory uses and
- ii) Statistical uses.

A regulatory use includes, planning, policy making and administrative control and the Statistical use comprises construction of price indices, framing estimates of National Income and analytical studies. Data on prices of agricultural commodities is needed by the Government generally for policy making and administrative purposes and by the traders for their sale/purchase business. The Government needs price data, not only for the formulation of current policy but also for the assessment of progress in the implementation of these policies and plans.

## **REPORT ON AGRICULTURE CENSUS (QUINQUENNIAL)**

The report presents information on Land holdings, land utilisation, irrigation, crops and changes in the structure of agriculture such as size, distribution of holdings, tenancy and agricultural resources. It provides benchmark data needed for formulating agricultural development programmes and for evaluating the progress. It also provides the basic frame of operational holdings for carrying out future agricultural surveys. The data collected through the Census form the basis for developing an integrated programme for agricultural development and basis for the Government to frame necessary policies and programmes for the benefit of landholders in general and small and marginal landholders in particular.

## **REPORT ON INPUT SURVEY (QUINQUENNIAL)**

The report presents data regarding inputs like improved seeds, fertilizers, pesticides applied for raising crops and information on livestock, agricultural machinery, organic manure, institutional credit taken for cultivation etc.

## **SEASON AND CROP REPORT (ANNUAL)**

This report presents data on land use, cropping pattern, productivity, irrigation, agricultural wages etc. The data given in the report are of immense use to Planners, Policy makers, traders etc. The Ministry of Agriculture require these details for taking decision on pricing, procurement, export, import etc., at National level.

## **STATISTICAL HAND BOOK (ANNUAL)**

This Publication gives the factual account of Socio economic indicators of the U.T. of Puducherry based on statistics currently available on various sectors of the State Economy at macro level.

## **STATE DOMESTIC PRODUCT (ANNUAL)**

The Report gives detailed information regarding the State Domestic Product and Per capita Income of the Union Territory of Puducherry both at current and constant prices. The estimates presented in the Publication depict a dynamic picture of the economic situation of the Union Territory.

## **USER ORGANISATIONS**

Central / State Government Departments / Ministries at the Centre / NITI AAYOG/ Finance Commission/ Ministry of Agriculture and Co-operation/Ministry of Industries/ Labour Bureau, Shimla / Development Commissioner for SSI/Central Government Organisations/ RBI /Lead Bank /National Bank for Agriculture and Rural Development/Non-official Agencies/Academic Bodies/Research Scholars/Economists /Entrepreneurs.

## **ACTIVITIES OF THE STATISTICAL CELLS IN MAJOR DEPARTMENTS**

### **INTRODUCTION**

Apart from the Directorate, Statistical Cells are functioning in various Departments/Agencies to look after their statistical requirements. Brief description of

activities in various Departments is given below:

### **AGRICULTURE**

The Statistical Cell in the Directorate of Agriculture comprises of one Statistical Officer, one Statistical Inspector and nine Field Supervisors in Puducherry and one Statistical Inspector and three Field Supervisors in the Office of the Karaikal region. The Cell is responsible for collection of Agricultural Statistics under various schemes operated by the Department. It conducts periodically the crop estimation survey on paddy, groundnut, sugarcane etc., in order to estimate the production. Weekly, monthly, quarterly, and annual reports on agriculture are also prepared and submitted to the Government of India from time to time. Preparation of reports/statements under Plan schemes operated by the Department is also done by the Cell.

### **ANIMAL HUSBANDRY**

A full-fledged statistical unit functions in the Animal Husbandry Department under the charge of Deputy Director (Statistics). He/she is assisted by one Statistical Officer, one Statistical Inspector and four primary enumerators (Field Supervisor). One Statistical Inspector and two primary Enumerators (Field Supervisor) are working in the Regional Office of the Department at Karaikal. The Cell is mainly engaged in the conduct of integrated sample survey for the estimation of production of major livestock products. The survey is conducted every year and data on milk and egg production are collected. The data on the estimates of production are compiled and analysed and forwarded to the Government of India. The details of number of animals slaughtered, average quantity of meat obtained per animal and poultry meat production are also collected by the Cell through surveys. Apart from the above, the Cell also collects the retail prices of various feeds and livestock products and details of milk procured by the Co-operative Milk Societies and furnishes them to the Government Agencies as and when required. It is also undertaking quinquennial livestock Census.

The following reports are also prepared by the Cell: -

1. Fortnightly report on the important developmental activities of the Department.
2. Annual Administration Report of the Department.
3. Data on socio-economic indicators pertaining to Animal Husbandry Department.

## **SCHOOL EDUCATION**

A Statistical Cell, comprising of one Statistical officer, four Statistical Inspectors and two Field Supervisors function in the Directorate of Education, Puducherry. The Cell is primarily engaged in the collection, compilation, tabulation of primary data relating to educational activities being carried out in the State. Reports containing the data on the list of educational institutions, enrolment of students in schools, strength of teaching and non-teaching staff, infrastructure facilities available in schools, statistical tables consisting data on students strength - stage-wise, gross enrolment ratio, teacher-pupil ratio etc., are also prepared by the Cell. Periodical returns are prepared for onward transmission to the Ministry of Education for incorporation in the Publication "Statistics of Education in States". An Annual Report of numerical and financial data of school level education and higher education and examination results are furnished to the Ministry of Human Resources Development.

## **HEALTH**

The Statistical cell, of the Health Department has a Deputy Director as its Head, with three Statistical Officers, six Statistical Inspectors, and four Field Supervisors. Apart from this, three Statistical Officers, one Statistical Inspector, and two Field Supervisors are working in the Offices of the outlying regions. The main functions of the Cell are as follows:

1. Furnishing of reports on Health and Family welfare programmes to Ministry/ Directorate General of Health Services, New Delhi.
2. Preparation of materials for the Conference, Meetings - Annual Plan and Five-Year Plan discussions.
3. Constitution of State / District level committees / societies for the implementation of various Health & Family Welfare Programmes.
4. Release of advertisement in Newspapers/magazines regarding Health and Family Welfare achievements and activities.
5. Monthly periodical review of progress of all programmes.
6. Matters related to pulse polio programme.
7. Preparation of Annual Report - Assembly / Parliament questions related to Health care programmes and follow up actions.
8. Issuing of instructions/circular to the Programme Officers/Health Institutions to take preventive measures to avert the possibility of any outbreak of diseases.

9. Preparation of monthly report on family welfare and immunization and quarterly report on rural health schemes, and Annual Report on FWP.
10. Consolidation of the statistical particulars in respect of PHC/CHC/District hospital for onward transmission to Government of India.
11. Preparation of quarterly report on a) post-partum programme b) FWP c) RCH programmes and furnish the same to the Government of India.
12. Furnishing of particulars for Family Year Book brought out by the Government of India.
13. Preparation of District Action Plan/State Action plan.
14. Preparation of weekly, monthly, annual reports regarding UIP programme.
15. Preparation of monthly report on cholera/gastroenteritis and morbidity and mortality due to diarrhea.
16. Evaluation of the UIP programme.
17. Assisting the Deputy Director (Health) and Surveillance Medical Officers for conducting training for re-orientation of AFP cases and correspondence work in connection with AFP cases.
18. Preparation of weekly/quarterly report regarding surveillance of acute flaccid paralysis.
19. Assist the Deputy Director (Health) in the conduct of PPI/IPPI and
20. Preparation of monthly report on communicable diseases and furnishing of the same to Government of India.

## **INDUSTRIES**

Statistical Section comprises of one Statistical Inspector and three Field Supervisors.

1. Implementation of the Centrally Sponsored Scheme “Collection of data on SSI in Puducherry”
2. Conduct of sample survey on Small Scale Industries.
3. Conduct of diagnostic survey on Small Scale Sick Industrial units.
4. Preparation of the publication “Compendium on Industrial Statistics” and “Industrial Directory”.
5. Conduct of comprehensive survey on the development activities of the Industries.



6. Frame List Entry i.e., the details of all the permanently registered units in a year such as the product, amount of Investment in plant and machinery, employment and plant capacity have to be entered as per the frame list furnished by the Office of the Development Commissioner, SSI, New Delhi and
7. Submission of quarterly/ monthly/ fortnightly progress report to the Government of India.

### **LOCAL ADMINISTRATION**

A Statistical Cell functions in LAD under the charge of the Deputy Director (Vital Statistics), with one Statistical Officer and two Statistical Inspectors. The LAD functions in the UT of Puducherry as the Office of Chief Registrar of Births and Deaths and Deputy Director (Vital Statistics) is the Additional District Registrar of Births and Deaths. Report on Registration of Birth and Death Act is prepared by the Cell for onward transmission to the Registrar General of India, New Delhi. The Cell functions in accordance with the provisions of Registration of Births and Deaths Act 1969. Co-ordination in the matter of registration and collection of vital statistics is maintained by the Cell with the Municipalities. The cell is also responsible for propagating the importance of registering the births and deaths at various places and for making suitable arrangements for the same. It also conducts annual inspection of Civil Registration Centre in the Union Territory of Puducherry and convene the committee on vital statistics periodically. The Cell is primarily engaged in the collection, compilation and analysis of the data relating to vital statistics. Apart from the above, the Cell also brings out an Annual Administration Report of the Commune Panchayats. It also collects and compiles information on statistics relating to local bodies and furnishes the same to the various Government agencies viz., road statistics, health statistics and Accounts etc.,

### **PUBLIC WORKS**

The Statistical Cell in the Public Works Department comprises of one Deputy Director called as Research Officer and one Statistical Inspector. The main functions are as follows:

1. Furnishing of monthly progress report on National High Ways on E & I schemes to the Ministry of Surface Transport, New Delhi.
2. Quarterly progress Report on minor irrigation to Ministry of water Resources, New Delhi.
3. Preparation of progress report on Basic Minimum Services, all Plan schemes, all civil works costing more than one crore & Rural Water Supply.

4. Reports on all on going works are also prepared and sent to Govt. of India, New Delhi, and Secretary (Works), Govt. of Puducherry.
5. Intensive Examination reports on materials procured from Central Government, Progress report is also sent to the Vigilance office, Puducherry.
6. Preparation of progress Report on road statistics and
7. Undertaking Minor irrigation census periodically.

### **SOCIAL WELFARE**

The Statistical Cell headed by a Deputy Director called as Research Officer consists of one Statistical Officer and two Statistical Inspectors. The main functions of the statistical cell are as follows:

1. Evaluation and Monitoring of schemes.
2. Preparation and submission of periodical reports to the Government of India.
3. Works relating to the position of minorities in the U.T.

### **TOWN AND COUNTRY PLANNING**

The Statistical Cell consists of one Statistical Officer.

1. Collection, analysis and submission of secondary data to the Head of Department for preparation of Development Plans for the Urban and Rural settlements in the U.T of Puducherry
2. Preparation of Annual Plan proposals, work related to allocation/re-allocation of funds under various Housing & Urban development schemes implemented by the Department and
3. Monitoring and reporting work related to Land Acquisition.

### **WOMEN AND CHILD DEVELOPMENT**

In the Department of Women and Child Development, five Statistical Inspectors in Puducherry region and one Statistical Inspector in the Office of the Karaikal region are working in the ICDS projects. The main function is to collect the statistical data regarding the centrally sponsored ICDS from the zones, consolidate and furnish the progress reports to the Government of India regularly on monthly, quarterly, half-yearly and annual basis. Apart from this, various other data regarding the activities of the Department are furnished to the agencies concerned as and when required by them.



**ANNEXURE – I**

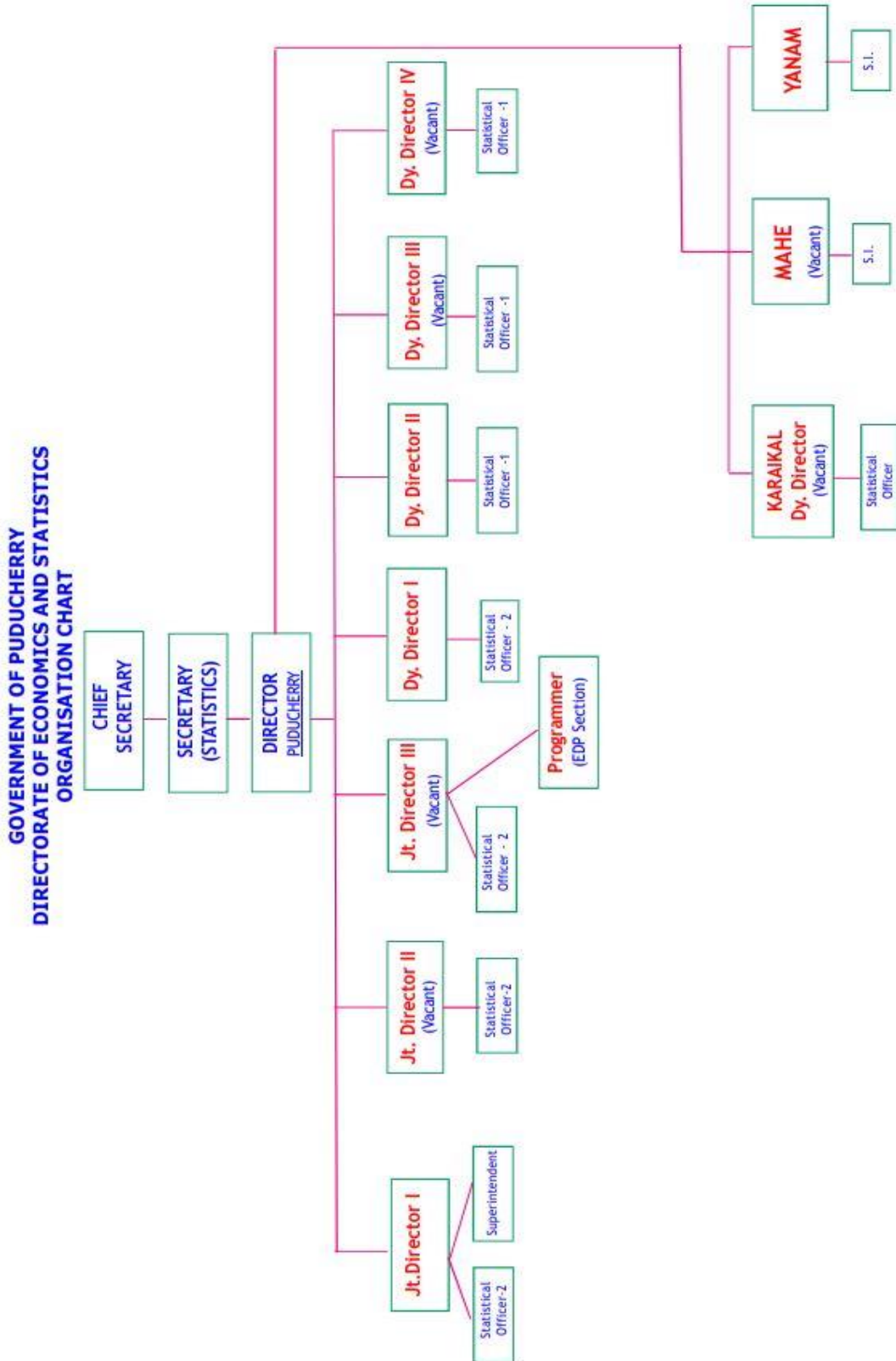
**GOVERNMENT OF PUDUCHERRY  
DIRECTORATE OF ECONOMICS AND STATISTICS**

**ROLL OF DIRECTORS**

<b>Sl. No.</b>	<b>Name of the Officer (Tvl.)</b>	<b>From</b>	<b>To</b>
1	AJAIB SINGH	August-1957	August-1963
2	MUTHUBASAVAN S	August-1963	November-1969
3	SUBBARAYALU V	December-1969	February-1972
4	MUTHUBASAVAN S	March-1972	May-1989
5	SUBBARAYALU V	June-1989	September-1991
6	ALBERT A R	October-1991	July-1992
7	BRITTO G	July-1992	October-1992
8	ALBERT A R	November -1992	August-1993
9	KRISHNA RAAJ S	September-1993	December-1993
10	SAMINATHAN S	January-1994	August-1994
11	KRISHNA MURTHY K S	September-1994	September-1996
12	VAITTIANADANE S	November -1996	October-1997
13	KANAGASABAI S	November -1997	October-2000
14	Dr. VAITTIANADANE S	October-2000	June-2017
15	Dr. RAMAKRISHNAN R	July-2017	Till Date

**ANNEXURE - II**

**ORGANISATION CHART**



A decorative border made of green vine-like patterns with small leaves and flowers, framing the central text. It starts at the top right, goes down the right side, then across the bottom, and up the left side.

Officer / Staff Associated

**Shri. S. RATHINAVELU**  
**Deputy Director**

and

**Shri. V. MOHANKUMAR**  
**Statistical Inspector**