



सत्यमेव जयते

GOVERNMENT OF PUDUCHERRY

ANNUAL REPORT 2016-17



**DIRECTORATE OF ECONOMICS AND STATISTICS
PUDUCHERRY**



GOVERNMENT OF PUDUCHERRY



ANNUAL REPORT

2016-17



DIRECTORATE OF ECONOMICS AND STATISTICS
PUDUCHERRY



**Thiru. D. MANIKANDAN, I.A.S.,
Secretary (Economics & Statistics)**

**Chief Secretariat
No. 1, Goubert Avenue,
Puducherry – 605 001 .**

FOREWORD

I am happy to note that the Directorate of Economics and Statistics has brought out the Publication - "*Annual Report 2016-17*". The Annual report presents the activities and achievements made by the Directorate during 2016-17. The Annual Report also contains the Socio-Economic Indicators relating to various sectors of the Union Territory Economy which will be useful to departments implementing various welfare and development schemes. Photographs on important events are also incorporated in the Publication

I hope that this report would serve as a reference book on the functioning of the Directorate in the Union Territory.

Suggestions for improvement in the quality, timeliness and presentation are most welcome.

**Puducherry,
June, 2017.**

**(D. MANIKANDAN, I.A.S)
Secretary (Economics & Statistics)**



Dr. S. VAITTIANADANE
DIRECTOR

**505, Kamarajar Salai,
Puducherry – 605 013.**

PREFACE

The *Annual Report 2016-17* is the eighteenth report in its series. The Annual Report focuses not only the functional activities of the Directorate but also helps to make an assessment of the programme, activities and achievements made by the Directorate during the year under report. It also highlights the likely performance to be made in the years to come. As per the directions of the Administrative Reforms wing, Puducherry, new features viz, targets and achievements of the Directorate for year 2016-17, Budget details and reports on RTI Act are added in this publication.

The publication also presents the selected Socio-Economic indicators pertaining to the Union Territory of Puducherry.

Suggestions if any to improve the publication are most welcome.

**Puducherry,
June, 2017.**

(Dr. S.VAITTIANADANE)
DIRECTOR

CONTENTS

Sl. No.	Topics	Page No.
1	Introduction	1
2	Statistical Scenario of the Union Territory	1
3	Targets and Achievements	4
4	Budget	5
5	Socio- Economic Profile of the Union Territory	6
6	Role of DES in U.T. of Puducherry	14
7	Organisation set up	14
8	Functions of the Directorate	14
9	Schemes Implemented by the Directorate	16
10	Duties and Responsibilities	17
11	Statistical Activities of the Directorate during 2016-17	20
12	Committees	33
13	Details of Workshop/Discussions/ Conference/Training conducted by DES, Puducherry	35
14	Statistical Publications	36
15	Activities of Statistical Cells in major Departments	40
16	Annexure-I: Roll of Directors	47
17	Annexure-II: Organization Chart	48

ANNUAL REPORT 2016-17

INTRODUCTION

Puducherry, a small Union Territory on the East Coast of India extends over an area of 490 Sq. Kms. It comprises of four geographically non-contiguous regions namely, Puducherry, Karaikal, Mahe and Yanam. Puducherry, the capital of the U.T., is on the east coast and south of Chennai at a distance of 162 Kms. Karaikal lies at 130 Kms. south of Puducherry. Mahe is situated near Tellicherry, geographically between Kozhikode and Kannur districts of Kerala at a distance of 850 Kms from Puducherry. Yanam is situated on the east coast geographically as an enclave of East Godavari district of Andhra Pradesh and politically forming part of the U.T. of Puducherry at a distance of 870 Kms (North) from Puducherry. The Union Territory of Puducherry (UTP) consists of two districts viz., Puducherry District comprising of Puducherry, Mahe and Yanam regions and Karaikal district comprising of Karaikal region.

STATISTICAL SCENARIO IN THE U.T.

With the increasing involvement of the state in welfare activities, there is a growing need for statistics in all productive activities and their presentation in a meaningful framework to facilitate decision making. This led to the creation of Directorates of Economics and Statistics (DES) in all States and Union Territories. For the purpose of co-ordination of Statistical activities of the U.T and for the promotion of Statistical standards, the Directorate of Economics and Statistics was set up in August 1957 in the U.T. of Puducherry. The main thrust of the Directorate in the initial years was to serve as a focal point of information on various subject matter fields of statistics. DES has been declared as Nodal Agency for all the statistical activities of the Union Territory of Puducherry during 1982. Since then DES is acting as the Nodal Agency and Statistical Authority for developing and managing the statistical system in the Union Territory.

The Directorate has witnessed continuous growth over the years and the responsibilities of the Directorate both in terms of scope and nature of work had increased considerably. The Statistical Science has assumed

paramount importance for socio-economic planning and policy formulation in recent years. DES plays a key role in building up of a sound data base covering various sectors of the U.T economy and provides valuable inputs for planning and policy formulation. Thiru. D.MANIKANDAN., I.A.S., is the Secretary (Statistics) for DES. The Director, Dr. S. VAITTIANADANE is the Head of Department, Dr. R. RAMAKRISHNAN, Joint Director is the Head of Office for DES.

The functional and organizational structure of the Directorate of Economics and Statistics in the past 50 years has experienced phenomenal growth to meet the growing demands of the statistical system. Many new units have also been set up in the DES as well as in other Departments/Agencies with a view to revitalize the activities of the Directorate and for meeting the growing demands for socio-economic statistics in respect of the Union Territory. Both the delivery system and the style of functioning of the DES have been dynamically designed to offer timely and efficient information service to the user agencies. The statistical technique has been simplified over the past decades with enormous visual aids so that any common man can understand and appreciate the basis of statistics.

The DES provides technical assistance in statistical matters to the U.T. Government and other Government Departments, viz.,

- ❖ Guidance in conduct of survey/ study.
- ❖ Population projections.
- ❖ Preparation of Publications
- ❖ Providing trained statistical manpower to other Departments/Agencies for undertaking survey/study as and when required, and
- ❖ Undertaking adhoc surveys for various Departments of Union Territory of Puducherry.

The DES acts under the guidance of (i) Central Statistical Office, New Delhi, (ii) National Sample Survey Office, Kolkotta, (iii) National Buildings

Organisation, New Delhi and (iv) Labour Bureau, Shimla. Also, DES keeps close liaison with various Ministries at the Centre and implements various Centrally Sponsored Schemes.

Dr. R. Ramakrishnan Joint Director in the Directorate has been designated as Public Relation Officer and Public Information Officer under RTI Act 2005 to look into the grievances of the staff and the public. Office procedure, rules and regulations as prescribed in the office manual are implemented strictly. A display board has been set up in the premises of the Directorate indicating the names of the officers and designation along with subjects dealt by them.

The DES has already published the fourth revised edition of the Citizen Charter. The DES also has a separate interactive website and all statistical information/publications/Citizen Charter/RTI particulars are also made available in the official Website of DES: <http://statistics.puducherry.gov.in>

The population of the U.T of Puducherry as per 2011 Census was 12.47 lakhs and the Decadal Population growth rate is 28.1%. The density of population has increased from 769 persons per Sq. Km in 1961 to 2547 persons in 2011. The literacy rate has increased from 37.43% in 1961 to 85.8% in 2011.

The Revised Estimates of GSDP of Puducherry in 2015-16 has been worked out to Rs.26533.46 Crores at current prices. The per capita income (on the base of NSDP) for the year 2015-16 (Revised Estimates) has been estimated at Rs.1,72,143/-. The sectoral composition of the GSDP at current prices in 2015-16 (Revised Estimates) indicates that the percentage share of Primary, Secondary and Tertiary sectors as 7.10%, 43.80% and 49.10% respectively.

TARGETS AND ACHIEVEMENTS FOR 2016-17

Sl. No	<u>Targets</u>	<u>Achievements</u>
1	Bringing out of Publications	<p>The following publications were released</p> <ol style="list-style-type: none"> 1. Annual Report 2015-16 2. Monthly Price Bulletin up to March, 2017 3. Budget-in-Brief 2014-15 4. Puducherry at a Glance 2016 5. Report on End-line Survey on KAP for the Election Department
2	Release of Publications in Tamil	Price Bulletin up to March 2017
3	Celebration of 10 th National Statistics Day	Celebrated in a fitting manner

BUDGET

The details of Outlay and Expenditure during year 2016-17 are as follows:-

(Rupees in Thousands)

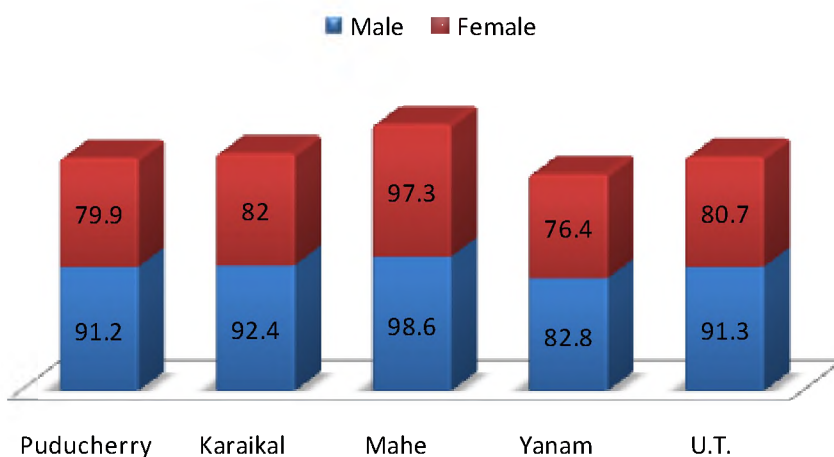
Sl. No.	Name of the Scheme	B.E. 2016-17	R.E. 2016-17	Actual Expenditure 2016-17	Percentage of expenditure on par with R.E. 2016-17
1	2	3	4	5	6
1	Non Plan	35800	35000	33222	94.92
2	Plan	2200	2200	2060	93.64
CENTRALLY SPONSORED SCHEMES					
3	Agriculture Census	4150	3725	3369	90.44
4	Timely Reporting Scheme	2750	2400	2295	95.63
5	Improvement of Crop Statistics	1850	1300	1188	91.38
6	Urban Statistics for HR & Assessment	400	388	83	21.39
7	Support for Statistical Strengthening	50	2828	0	0.00

SOCIO-ECONOMIC PROFILE OF THE UNION TERRITORY OF PUDUCHERRY

Item	Year	Unit	Puducherry	Karaikal	Mahe	Yanam	U.T.
Area		Sq.km.	294	157	9	30	490
Density of population	2011 census	Per sq.km.	3232	1275	4646	1854	2547
Towns	"	No.	6	2	1	1	10
Statutory Towns	"	"	3	1	1	1	6
Census Towns	"	"	3	1	0	0	4
Taluks	"	"	4	2	1	1	8
Municipalities	"	"	2	1	1	1	5
Commune Panchayats	"	"	5	5	0	0	10
Community Development Blocks	"	"	2	1	0	0	3
Revenue villages	"	"	81	37	5	6	129
Revenue villages having more than half of their total population as SCs	"	"	10	0	0	0	10
Population	"	Person (%)	950289 (76.1)	200222 (16.0)	41816 (3.4)	55626 (4.5)	1247953 (100.0)
Urban	"	"	657209 (69.2)	98102 (49.0)	41816 (100)	55626 (100)	852753 (68.3)
Rural	"	"	293080 (30.8)	102120 (51.0)	-	-	395200 (31.7)
Male	"	"	468258 (49.3)	97809 (48.9)	19143 (45.8)	27301 (49.1)	612511 (49.1)
Female	"	"	482031 (50.7)	102413 (51.1)	22673 (54.2)	28325 (50.9)	635442 (50.9)
Age 0-6 population	"	"	99838 (10.5)	22263 (11.1)	4553 (10.9)	6204 (11.2)	132858 (10.6)
Decadal growth	"	%	29.2	17.2	13.5	77.2	28.1
Sex Ratio	"	Per '000 Males	1029	1047	1184	1038	1037
SC population	"	Person (%)	152406 (16.0)	35348 (17.7)	144 (0.3)	8427 (15.2)	196325 (15.7)
Urban	"	"	66782 (43.8)	10547 (29.8)	144 (100)	8427 (100)	85900 (43.8)
Rural	"	"	85624 (56.2)	24801 (70.2)	-	-	110425 (56.2)
Male	"	"	74129 (48.6)	17206 (48.7)	77 (53.5)	4100 (48.7)	95512 (48.6)
Female	"	"	78277 (51.4)	18142 (51.3)	67 (46.5)	4327 (51.3)	100813 (51.4)

Item	Year	Unit	Puducherry	Karaikal	Mahe	Yanam	U.T.
DISTRIBUTION OF RELIGIOUS POPULATION							
Hindus	"	Person (%)	855294 (90.0)	152638 (76.2)	27940 (66.8)	53537 (96.2)	1089409 (87.3)
Muslims	"	"	32674 (3.4)	28835 (14.4)	12856 (30.8)	1191 (2.1)	75556 (6.1)
Christians	"	"	58328 (6.1)	18391 (9.2)	958 (2.3)	873 (1.6)	78550 (6.4)
Sikhs	"	Person	245	46	3	3	297
Buddhist	"	"	366	63	21	1	451
Jain	"	"	1328	54	14	4	1400
Others	"	"	147	14	3	4	168
Not stated	"	"	1907	181	21	13	2122
LITERACY RATE							
Persons	"	%	85.4	87.1	97.9	79.5	85.8
Male	"	%	91.2	92.4	98.6	82.8	91.3
Female	"	%	79.9	82	97.3	76.4	80.7

Literacy Rate



Item	Year	Unit	Puducherry	Karaikal	Mahe	Yanam	U.T.
HOUSEHOLDS							
Total No. of Households	2011 census	No.	230703	51219	7197	13308	302427
No. of House holds without Latrine facility	"	"	72744	19742	156	2413	95055
Permanent (HH)	"	"	183147	32245	7090	11637	234119
Semi Permanent (HH)	"	"	19253	9882	77	373	29585
Temporary (HH)	"	"	26853	7642	28	1279	35802
Normal (HH)	"	"	230765	49614	7396	13790	301565
Institutional (HH)	"	"	304	63	17	9	393
Houseless (HH)	"	"	444	28	7	13	492
WORKERS							
Total Workers (Main and Marginal workers)	2011 census	No.	348105	68301	11802	16760	444968
Main workers	"	"	315570	58342	10404	15373	399689
Marginal workers	"	"	32535	9959	1398	1387	45279
Non workers	"	"	602184	131921	30014	38866	802985

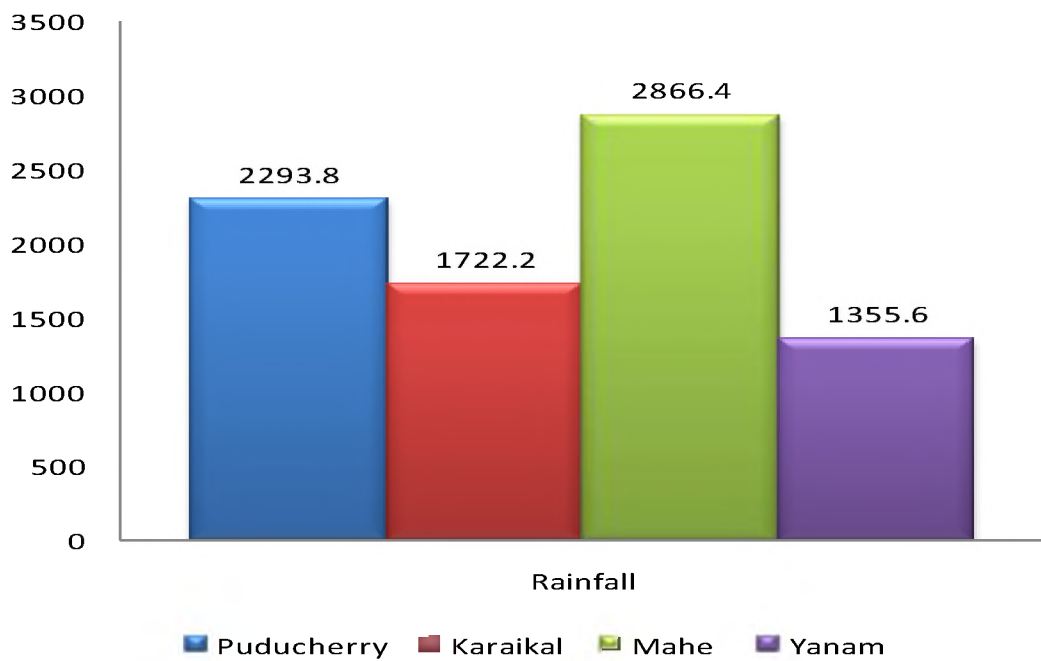
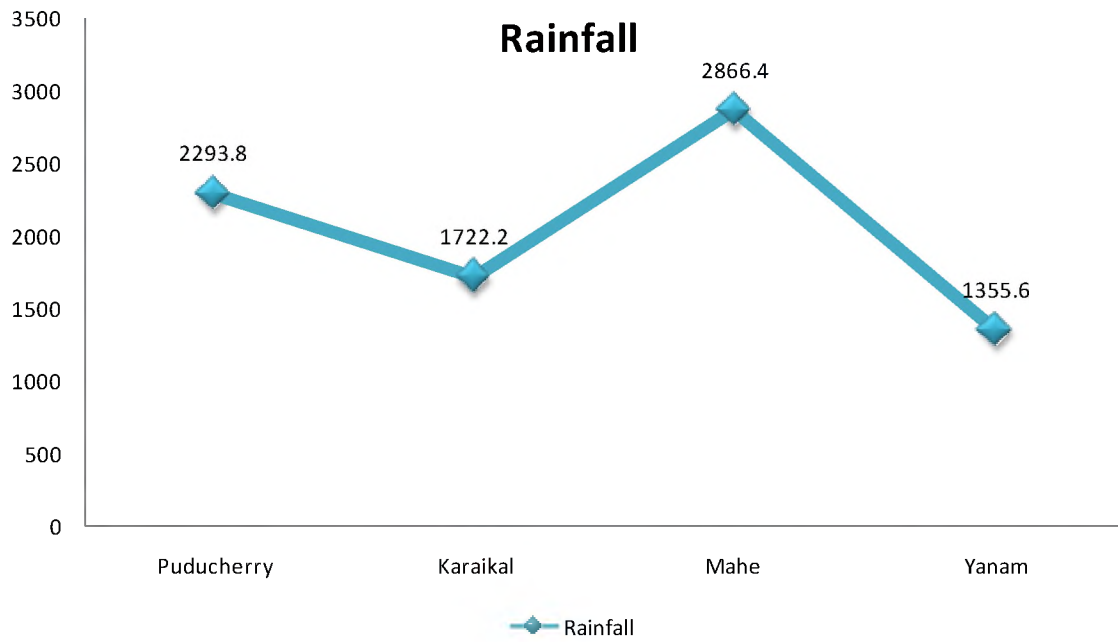
Item	Year	Unit	Puducherry	Karaikal	Mahe	Yanam	U.T.
HEALTH (GOVERNMENT OF PUDUCHERRY INSTITUTIONS)							
Hospitals	2016-17	No.	5	1	1	1	8
Medical College and Hospital	"	"	1	0	1	0	2
Dental College and Hospital	"	"	1	0	0	0	1
Chest Clinic	"	"	1	0	0	0	1
Community Health Centres	"	"	2	1	1	0	4
Primary Health Centres	"	"	27	11	1	0	39
Sub-centres	"	"	56	17	4	5	82
ESI Dispensaries	"	No.	11	2*	1	1	15
Doctors (U.T. Govt)**	"	"	343	92	38	33	506
Nurses (U.T. Govt)**	"	"	768	274	85	70	1197
Beds (U.T. Govt)**	"	"	1384	506	171	100	2161
JIPMER Beds	"	"	2465	0	0	0	2465
Birth Rate	SRS 2015						13.8
Death Rate	"						6.8
Infant Mortality Rate	"						11
* 1 Part time Dispensary	** Excluding IGMC&RI and MGPGIDS						

Item	Year	Unit	Puducherry	Karaikal	Mahe	Yanam	U.T.
SCHOOL EDUCATION (GOVERNMENT & PRIVATE)							
Primary school							
i. No. of Institutions	2016-17	No.	187	78	11	15	291
ii. No. of Students (All classes)	"	"	13339	4824	1235	1782	21180
Middle school							
i. No. of Institutions	"	No.	52	20	9	0	81
ii. No. of Students (All classes)	"	"	7715	2881	1495	0	12091
High school							
i. No. of Institutions	"	No.	131	48	7	17	203
ii. No. of Students (All classes)	"	"	45891	12426	3431	6495	68243
Higher Secondary (including Junior college)							
i. No. of Institutions	"	No.	135	24	7	4	170
ii. No. of Students (All classes)	"	"	110860	19084	4050	1493	135487
TEACHER PUPIL RATIO							
Primary school	2016-17		1:13	1:12	1:18	1:17	1:13
Middle school	"		1:11	1:12	1:16	-	1:12
High school	"		1:19	1:18	1:23	1:17	1:19
Higher Secondary school	"		1:23	1:23	1:14	1:13	1:23
Classes I to V	2015-16	No.	99	95	89	95	98
Classes VI to VIII	"	"	99	98	91	92	98
Classes IX & X	"	"	97	99	91	102	97
Classes XI & XII	"	"	117	151	88	116	120
All Stages	"	"	100	100	90	97	100
Anganwadi centres	2016-17	"	661	172	13	9	855
Aadhaar cards issued (Estimated population-2016)	As on 15.10.16	"	985643 (1080293)	197183 (216788)	41060 (44558)	44744 (74044)	1268630 (1415683)

Item	Year	Unit	Puducherry	Karaikal	Mahe	Yanam	U.T.
AGRICULTURE							
Rain fall	June'15 to May'16	mm	2293.8	1722.2	2866.4	1355.6	---
Net area sown	2015-16	Ha.	9538	4287	576	636	15037
Gross area irrigated	"	"	15962	4577	30	511	21080
Foodgrains Production	"	Metric Tonnes	35546	7684	--	767	43997
Rice Production	"	"	35437	7682	--	767	43886
Sugarcane Production	"	"	213968	--	--	--	213968

Net Area Sown and Gross Area Irrigated

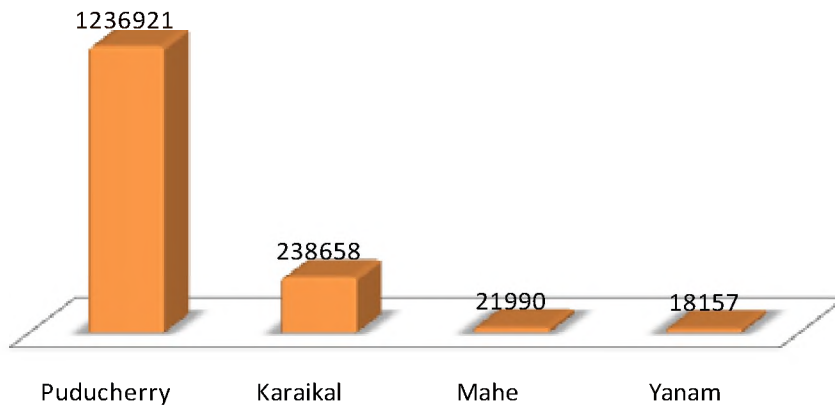




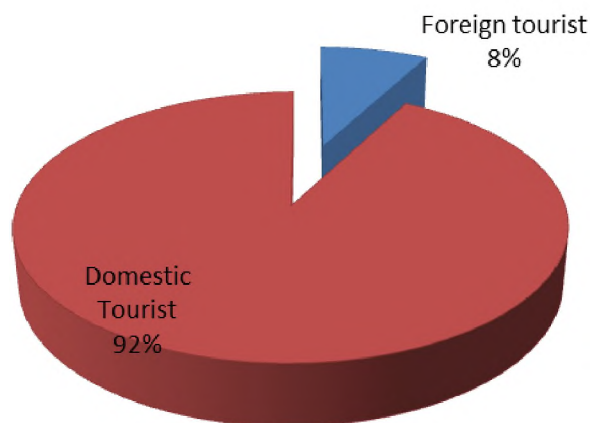
Item	Year	Unit	Puducherry	Karaikal	Mahe	Yanam	U.T.
FISH PRODUCTION							
Marine	2016	Matric Tonnes	15623	19659.05	5696	6300.8	47278.9
Inland	"	"	2324	693.15	--	1285	4302.15
Animal Husbandry							
Milk Production	2016-17	MTs.	35200	10751	267	2083	48301
Egg Production	"	in. lakh No.	73.54	35.48	2.19	2.35	113.56
Civil Supplies							
Fair Price Shops	As on 31.03.17	No.	385	91	18	22	516
Ration shops run by Co-operative institutions		No.	360	82	18	22	482
RATION CARDS							
APL (Yellow card)	"	"	114712	28245	7907	4053	154917
BPL cards							
i. AAY cards	"	No.	15832	9618	46	2133	27629
ii. Red cards	"	"	121713	21085	170	9697	152665
Total BPL cards	"	%	137545 (54.5)	30703 (52.1)	216 (2.7)	11830 (74.5)	180294 (53.8)
All Ration cards	"	No.	252257	58948	8123	15883	335211
BANKING							
No. of Scheduled Commercial Banks, PSCB, PCCLDB & RRBs/ Branches	As on 31.03.17	No.	190	50	14	9	263
Deposits	"	Rs. in crore	12195.34	1682.29	578.33	207.51	14663.5
Credit	"	"	8266.7	1621.93	225.29	134.9	10248.8
Population per Bank	Person	No.	5002	4004	2987	6181	4745
Transport							
Road length (by PWD)	As on 31.03.17	km.	458.284	194.282	25.879	37.595	716.04
Total Registered Motor vehicles		No.	875845	88624	11337	5775	981581
CO-OPERATION							
No. of Societies	As on 31.03.17	No.	348	80	34	45	507
Membership	As on 31.03.16	'000 Nos	472359	76379	49349	25923	624010
Primary Agricultural Credit Societies	As on 31.03.17	No.	47	6	1	0	54
Membership (PACS)	As on 31.03.16	"	121101	12893	178	0	134172
STATE INCOME							
Gross State Domestic product (at Current prices)	2016-17 (AE)	Rs. in crore					29557.4
Net State Domestic product (at Current prices)	"	"					27510.5
Per Capita Income	"	Rs.					190384

Item	Year	Unit	Puducherry	Karaikal	Mahe	Yanam	U.T.
TOURISM							
Tourist arrival	2016	No.	1236921	238658	21990	18157	1515726
i. Foreign Tourist	"	"	115566	1720	149	2	117437
ii. Domestic Tourist	"	"	1121355	236938	21841	18155	1398289

Tourism



UT Tourism 2016 - 17



ROLE OF DES IN U.T. OF PUDUCHERRY

DES co-ordinates and controls statistical activities in the U.T of Puducherry and ensures timely generation of quality statistics and quick dissemination by optimum utilization of resources. A number of new units have also been setup in the DES mainly with a view to re-vitalise the activities of the Directorate and for meeting the growing demands for Socio-Economic Statistics in respect of the U.T. of Puducherry.

ORGANISATIONAL SETUP

The Director is the head of the Directorate with the status of “Head of Department”. He is assisted by three Joint Directors and three Deputy Directors with different Technical sections and establishment/Accounts Section. One Evaluation Cell is also functioning in the Directorate with one Deputy Director called as Evaluation Officer.

There is a Regional Office at Karaikal under a Deputy Director. He is provided with necessary staff to carry out the assigned duties and responsibilities. From 1996-97, Statistical Cells at Mahe & Yanam are functioning under the control of the respective Regional Administrators with the staff strength of one Statistical Inspector and 2 Field Supervisors in each Cell. The organisational chart of the Directorate is given in Annex-I. The Directorate functions as the cadre controlling authority of all statistical posts of this Administration including the matters like training, career and man power planning.

FUNCTIONS OF THE DIRECTORATE

- Acting as a Nodal agency and Statistical Authority for the development of statistical system in this Territory
- Co- ordination of all statistical activities in the U.T
- Compilation, tabulation and publication of data under Annual Survey of Industries from the factories registered under the Factories Act, 1948 and publication of statistical information to assess and evaluate the changes in the growth, composition and structure of the organized manufacturing sector.

- Collection of data on industrial production from selected registered factories and preparation and publication of industrial production indices of the U.T on annual basis.
- Regular collection, compilation, analysis and interpretation of data pertaining to various sectors of the economy and dissemination of the same to user agencies.
- Estimation of Gross State Domestic Product and Per capita Income on annual basis.
- Participation in the surveys conducted by the National Sample Survey Office (N.S.S.O) on matching sample basis.
- Participation in the Employment – Unemployment Survey conducted by Labour Bureau, Shimla on matching sample basis.
- Conduct of Census of Government Employees of the State Government and Central Government, Local Bodies and Autonomous Bodies.
- Preparation of Economic-cum-Purpose Classification of the U.T. Annual Budget.
- Collection, compilation and submission of housing and building statistics to the National Buildings Organisation, New Delhi
- Dissemination of statistical information in regular/ad-hoc publications.
- Collection of weekly wholesale and retail prices of essential commodities.
- Planning and Organising the following Quinquennial censuses:
 - Agriculture Census & Input Survey and
 - Economic Census
- Supply of statistical data and information to the Central Statistical Organisation, National Buildings Organization, Labour Bureau, Other Central Government Organizations, State Directorates of Economics and Statistics, State and Central Government Departments, Quasi-Government Organizations, Private Agencies and to Research scholars as per their requirements
- To act as a storehouse of important statistics collected and maintained by the different departments of the State Government.
- Conduct of Evaluation Studies
- Under taking of Adhoc Survey for user agencies as and when required

- ▶ Functionally the DES has been organized into 10 units at the Head Quarters namely
 - ▶ Agriculture
 - ▶ Annual Survey of Industries and Index Number of Industrial Production
 - ▶ Official Statistics
 - ▶ State Domestic Product and Public Finance
 - ▶ Publication and Co-ordination
 - ▶ Training and Economic Census
 - ▶ National Sample Survey
 - ▶ Price collection and Census of Government Employees
 - ▶ Evaluation and Adhoc surveys
 - ▶ Electronic Data Processing and computer centre

SCHEMES IMPLEMENTED BY THE DIRECTORATE

PLAN SCHEME: Under State Plan, DES is implementing only one Plan Scheme viz., “Strengthening of the State Statistical system” and the objective of the scheme is to revamp the statistical system of the DES and make the DES as the focal point for all statistical activities. The Scheme also envisages to undertake evaluation of plan schemes and all activities to speed up the process of collection and generation of grass root level information of all Socio-Economic activities in the Union Territory of Puducherry.

CENTRALLY SPONSORED SCHEMES: The Directorate is implementing the following Centrally Sponsored Schemes:

- 1) **Agriculture Census:** Aims at collection of quantitative information on structure of agriculture activities on quinquennial basis using the operational holding as the unit of enumeration.
- 2) **Timely Reporting Scheme:** To derive reliable estimates of area under principal crops at the end of each crop season i.e., Khariff, Rabi-I and Rabi-II and also the estimates of production of principal crops.
- 3) **Improvement of Crop Statistics:** - To improve the quality of collection of crop statistics.

- 4) **Economic Census:** Aims at collection of information from the unorganized segments of the non-agricultural sectors of the State economy on quinquennial basis.
- 5) **Support for Statistical strengthening :(Basic Statistics for Local Level Development (BSLLD and SSSP)** To collect basic statistics relating to the available infrastructure and other resources at village level.
- 6) **Urban Statistics for HR Assessment:** Under the scheme USHA, efforts are undertaken for collection and compilation of building construction statistics in the U.T of Puducherry. Prices of building materials on quarterly basis is regularly collected from all the four regions and forwarded to NBO and U.T user agencies.

NON-PLAN SCHEME: “Direction and Administration” is the only one Non-Plan Scheme which is staff oriented one.

DUTIES AND RESPONSIBILITES

DUTIES AND RESPONSIBILITES OF THE DIRECTOR

- + Director DES is the Head of the Department
- + Direction, Supervision and Overall in charge of the activities of the DES and controlling officer of the Joint Director/Deputy Director/other Statistical Officials of the DES and guides them for better implementation of the statistical schemes/activities.
- + Nodal Officer for all Statistical activities in the U.T of Puducherry under the collection Statistics Act -2008 and Collection of Statistics Rules 2011.
- + Statistical authority for collection, compilation and dissemination of statistical information relating to various sectors of the U.T Economy through Regular/Adhoc Publications.
- + Cadre control i.e Recruitment/Appointment and other related service matters of Statistical personnel in the Administration.
- + Co-ordination of all statistical activities in the U.T of Puducherry.
- + Provides technical guidance and advice to other statistical cells of the line departments in the administration, whenever necessary.

- ✦ Release of various statistical publications brought out by the Directorate
- ✦ Responsible for liaison with Central Statistical Office and National Sample Survey Office.
- ✦ Additional Agriculture Census Commissioner for conducting Quinquennial Agriculture Census and Input Survey.
- ✦ Additional Census Commissioner for Conduct of Economic Census
- ✦ Member Secretary of the high-level co-ordination committee for improvement of Crop Statistics.
- ✦ Member of the High-Powered Price Monitoring Cell
- ✦ Statistics Authority for Annual Survey of Industries-Residual Units
- ✦ Nodal Officer for uploading RTI progress reports

DUTIES AND RESPONSIBILITIES OF THE JOINT DIRECTORS

- ✦ Joint Director is the Head of Office in charge of establishment and administration.
- ✦ Overall in-charge of all statistical work done by the Statistical staff i.e., Monitoring, Inspection and Supervision of the work of the Statistical Officers, Statistical Inspectors and Field supervisors
- ✦ Assist the Director in the conduct of Review Meeting and supervision
- ✦ Assist the Director in all technical matters in the activities of Directorate of Economics and Statistics.
- ✦ Conduct of In-service Training to Statistical Officials.
- ✦ Planning & Designing and conduct of Agriculture/Economic Census/Input Survey.
- ✦ Planning & Designing and devising of formats and conduct of various adhoc surveys.
- ✦ Providing technical guidance in the preparation of State Income Estimates, Classification of the Budget, Index of Industrial Production and in the preparation of the various Publications.
- ✦ Acts as the Public Grievance Officer
- ✦ Acts as the Public Information Officer
- ✦ Acts as the Web Master for the website of DES.
- ✦ Member Secretary of the High- Level Committees.
- ✦ Member for Departmental Committee for grant of MACP to SO's, SI's and FS's.

DUTIES AND RESPONSIBILITES OF THE DEPUTY DIRECTORS

- ✦ All functions relating to DDO in DES
- ✦ In charge of Accounts and audit of DES
- ✦ Preparation of the GSDP Estimates
- ✦ Overall in-charge of all statistical work done by the Statistical staff, i.e., Monitoring, Inspection and Supervision of the work of the Statistical Officers, Statistical Inspectors and Field supervisors.
- ✦ Assist the Director/Joint Director in the conduct of Review Meeting and supervision
- ✦ Assist the Director/Joint Director in all technical matters in the field of Statistics
- ✦ Conduct of In-service Training to Statistical Officials
- ✦ Conduct of Evaluation Studies
- ✦ Planning & Designing and conduct of Agriculture /Economic Census
- ✦ Planning & Designing and devising of formats and conduct of various adhoc surveys.
- ✦ Preparation of various statistical Publications
- ✦ Preparation of Price Bulletin

DUTIES AND RESPONSIBILITES OF THE STATISTICAL OFFICERS

- ✦ The Statistical Officer is in-charge of the section under whom Statistical Inspectors and Field Supervisors are working.
- ✦ The Statistical Officer has to guide, supervise and co-ordinate the works relating to collection of Statistical data/estimation/preparation of reports etc.
- ✦ Furnishes Information under RTI Act.
- ✦ Web Editor for the Website of DES.
- ✦ Convening of Review Meetings.
- ✦ Assisting the Joint Director and Deputy Director in the discharge of their functions.

DUTIES AND RESPONSIBILITES OF THE STATISTICAL INSPECTORS

- ✦ Collection of Statistical data on various socio-economic sectors of the U.T through field work and correspondence.
- ✦ Undertaking field visits to check and verify the data collected by the primary enumerators.
- ✦ Computation of GSDP Estimates and Index of Industrial Production.
- ✦ Collection and Compilation of Agricultural Statistics.
- ✦ Preparation of Statistical Publications.
- ✦ Preparation of Analytical Reports as and when necessary.
- ✦ Supervision of the work done by the Field Supervisors.
- ✦ Assist the Statistical officer in the conduct of various Census and Surveys.

DUTIES AND RESPONSIBILITES OF THE FIELD SUPERVISORS

- ✦ Field Supervisors are the field functionaries of the DES
- ✦ Act as primary enumerators for collection of Agricultural statistics, Agriculture Census and allied Surveys and various adhoc surveys conducted by DES
- ✦ Conduct of crop cutting experiments at the time of harvest.
- ✦ Collection of land utilization statistics as per nine fold classification and irrigation statistics as prescribed by the Ministry of Agriculture in each village under their jurisdiction.
- ✦ Collection of statistical information on various surveys.

STATISTICAL ACTIVITIES OF THE DIRECTORATE DURING 2016-17 **COLLECTION OF AGRICULTURAL STATISTICS**

The yield statistics are collected by plot to plot enumeration method by the Field Supervisors of this Directorate in all the revenue villages in each crop season Khariff (July to October), Rabi-I (November to February) and Rabi-II (March to June) of an agricultural year (July to June).

Periodical meetings of the State Level Co-ordination Committee on Improvement of Agricultural Statistical System under the Chairmanship of Director, DES are held to discuss various issues relating to improvement in collection of Agricultural Statistics in the U.T. An annual publication entitled “Season and Crop Report” is being brought out.

Area Enumeration work for Khariff, Rabi-I and Rabi-II seasons have been successfully completed in all the revenue villages. The annual publication “**Season and Crop Report 2015-16**” has been published and hosted on the official Website.

AGRICULTURE CENSUS

The Directorate of Economics and Statistics has been conducting Agriculture Census quinquennially, a Centrally Sector Scheme of the Ministry of Agriculture and Farmers Welfare, Department of Agriculture, Co-operation and farmers welfare, Government of India.

The 9th Agriculture Census was conducted in the Union Territory of Puducherry with the Agriculture Year 2010-11 as the reference period on complete enumeration basis and the census was successfully completed.

The final Report on **Agriculture Census 2010-11** was brought out and the same has been uploaded in this Directorate website for the use of Planners, Policy makers in the field of Agricultural Economy, Research Scholars and others. 10th Agricultural Census (Phase I) is being carried out in the U.T. of Puducherry.

INPUT SURVEY:

Input-Survey 2011-12 as a follow-up Survey of Agriculture Census 2010-11 was also undertaken in the U.T of Puducherry as per the guidelines given by the Ministry of Agriculture, Department of Agriculture and co-operation, Government of India. Under the input Survey 2011-12 information had been collected according to five size-groups of operational holdings. Total no.of villages(Revenue villages) are 129 in the U.T of Puducherry, in which 10% of samples villages have been selected (7 villages

in Puducherry Region, 3 villages in Karaikal Region and each one village in Mahe and Yanam Region) Field work of Input Survey 2011-12 was undertaken in all the four regions.

The Input Survey 2011-12 was successfully completed, after careful examination of various records, the data sets of Input Survey and other related tables were validated and finalized and approval of Government of India was obtained. The final tables of inputs survey were generated as approved by the Government of India. The report on Input Survey 2011-12 has been brought out and hosted in this Directorate's website.

TIMELY REPORTING SCHEME (TRS)

The scheme is intended to provide timely and reliable estimates of area under major crops just after the sowing operation is completed. Area estimates of principal crops for all crop seasons of 2016-17 are sent periodically to the Ministry of Agriculture, New Delhi. Progress report regarding the operation of TRS is being sent periodically to the Ministry of Agriculture, New Delhi.

IMPROVEMENT OF CROP STATISTICS (ICS)

The Directorate of Economics and Statistics and NSSO make joint efforts for locating deficiencies in the system of collection of crop statistics in the Union Territory and suggest remedial measures under the scheme for improvement of crop statistics. The Sample check is carried out on a matching basis by the NSSO and the Directorate of Economics and Statistics to improve the quality of crop production statistics.

Area enumeration check has been carried out in 23 (TRS) villages in the U.T. of Puducherry except Mahe region. This Directorate has provided technical support and guidance to Agriculture Department Staff to conduct Crop Cutting Experiments in Puducherry and Karaikal regions for all three seasons of 2016-17 respectively. Two days refresher training to the primary workers and the supervisory staff of DES and Village Level Workers of

Agriculture Department, Puducherry and Karaikal, for conducting crop cutting experiments for Paddy was given by the Superintendent, NSSO (FOD) Puducherry, during 21st & 22nd July 2016 at Puducherry. Joint inspection of area enumeration check by members of District Level Committee was also carried out.



Refresher Training on Crop Estimation Survey: From left Dr. A Ramamourti, Director of Agriculture, Puducherry, Dr.S Vaithianadane, Director of DES, Puducherry, Shri D. Manikandan, I.A.S., Secretary for Statistics, Shri Augustian Lucian Tiague, Under Secretary (Finance), Govt. of Puducherry

CROP ESTIMATION SURVEY (CES)

The objective of crop estimation survey is to obtain in a scientific manner through conduct of crop cutting experiments reliable estimates of average yield per hectare and production of rice at State level with reasonable degree of precision.



Inspection at Crop Cutting Experimental plot at Revenue village Utchimeduby Dr. R Ramakrishnan, Joint Director (Right) accompanied by Shri S Rathinavelu, Statistical Officer

ANNUAL SURVEY OF INDUSTRIES (ASI)

The Annual Survey of Industries (ASI) is the principal source of industrial statistics. It is conducted every year to provide information on the changes in the growth, composition and structure of organised manufacturing (factory) sector which relates to manufacturing processes, repair services, generation, transmission of electricity, gas and water supply undertakings and cold storage. The survey is conducted under the statutory provisions of the Collection of Statistics Act 1953 and Collection of Statistics (Central Rules) Rules 1959. It covers only those industries registered under sections 2m (i) and 2m (ii) of the Factories Act 1948. The field work is conducted by the Field Operation Division (FOD) of NSSO.

INDEX OF INDUSTRIAL PRODUCTION (IIP)

The Directorate of Economics and Statistics, Puducherry is preparing the Index of Industrial Production for every year based on the methodology supplied by the Industrial Statistics Wing, Central Statistics office, Ministry of Statistics and Programme Implementation, Government of India.

For compilation of Index of Industrial Production, production data have been collected, scrutinized and validated for the year 2016-17. In this regard, a report on Index of Industrial Production for the year 2015-16 in respect of U.T. of Puducherry with base year 2004-05 has been brought out and uploaded in this Directorate's website.

PRICE STATISTICS

The price section of this Directorate is responsible for the collection of wholesale and retail prices of essential commodities on weekly basis from Puducherry, Karaikal, Mahe and Yanam markets. These data are presented in the form of monthly publication viz. "Price Bulletin" in English and Tamil. Based on the data collected, various reports have been prepared and sent to Reserve Bank of India, Labour Bureau, Shimla and Local Government Departments. Since Puducherry has been selected as one of the centre for computation of All India Consumer Price Index Number (CPI) for Industrial workers, the price quotations collected every week are forwarded to the Labour Bureau, Shimla.

CONFERENCE OF CENTRAL AND STATE STATISTICAL ORGANISATION

The 24th Conference of Central and State Statistical Organization was held at Nagpur. Dr. S Vaittianadane, Director of DES, Dr. R Ramakrishnan Joint Director of DES and Shri. R Parthasarathy, Deputy Director, DES, Puducherry participated in the conference held in January, 2017.

STATE DOMESTIC PRODUCT (SDP)

State Income is one of the important indicators of economic growth of a State and it helps to study the impact of various development activities implemented by the State on the economy. The State income estimates are computed both at current and constant prices. The State income at current prices reflects nominal growth of the economy whereas the State income at constant prices reflects the real growth of the economy. The per capita income is used to determine both the absolute and relative performance of the economy of Puducherry with that of the other states and U.Ts. It is used

by policy makers as an important indicator to measure the regional disparities and allocate Plan resources. Estimates of Gross State Domestic Product for the 2014-15 with base year 2011-12 has been published. The publication Budget in Brief 2014-15 has been brought out.

ANNUAL EMPLOYMENT-UNEMPLOYMENT SURVEY:

Labour Bureau, Ministry of Labour and Employment, Government of India has been conducting Annual Employment–Unemployment Surveys all over India in order to assess the trend in the employment–unemployment scenario. So far, six such surveys were conducted in the U.T. of Puducherry by DES, on behalf of Labour Bureau.



Training Programme on 6th Annual Employment Unemployment Survey 2016: From left Shri. R. Parthasarathi, Deputy Director of DES, Ms. Sonam, Junior Consultant, Labour Bureau, Ministry of Labour & Employment, New Delhi, Dr. S Vaithianadane, Director of DES, Puducherry, Dr. M. Manisekaran, Director General, Labour Bureau, Ministry of Labour & Employment

OFFICIAL STATISTICS

The Directorate is collecting data from various Departments of this Administration relating to the subjects like public health, vital statistics, education, joint stock companies, co-operation, labour and employment, industry, transport and communication, trade, police and crime, excise, plan expenditure, entertainment, life insurance, tourism, civil supplies,

fisheries, banking, elections, fuel and power social welfare and etc. The collected data are presented in various publications brought out by the Directorate.

CENSUS OF GOVERNMENT EMPLOYEES

This Directorate is conducting Census of Government Employees with the aim of assessing the volume of employment in the public sector and other related information such as pay and emoluments of State/Central Government employees and a Report on Census of Government Employees is brought out on annual basis. The report for the year 2015-16 has been brought out and uploaded in this Directorate's website.

NATIONAL SAMPLE SURVEY

The National Sample Survey Organisation conducts multi subject surveys and provides a sound data base for planning and policy formulation. The NSSO covers different subjects of importance such as employment & unemployment, consumer expenditure, land-holdings, livestock enterprises, debt and investment, social consumption, demography, morbidity and disability etc., through household surveys. The Socio-Economic surveys are carried out in the form of rounds, the period of a round being normally one year, in certain cases it may vary six months to one year. During the current year 2016-17, 74th Round is being taken up covering the subject Establishment Focused Survey of Service Sector – Phase-II.



Dr.S Vaithianadane, Director of DES, Puducherry delivering inaugural address during Training Programme on 74th Round of NSS - Phase II

TRAINING

In pursuance of the recommendations of the Third Conference of the Central and State Statistical Organisations held at New Delhi, a training unit was set up in DES in 1980. The basic aim of the training scheme is to make the primary/intermediate level statistical personnel conversant with the concepts, definitions and terminology of different subjects such as statistics, mathematics, economics and official statistics so as to improve the efficiency and ensure production of good quality of data. DES imparts in-service training to the officials of this Directorate periodically.

Support for Statistical Strengthening (SSS) - Central Sector Scheme

- In order to improve the State Statistical Systems of the State/ U.T, a World Bank assisted scheme “India Statistical Strengthening Project” was formulated
- It aimed at improving the Statistical Capacity and Infrastructure of the State Statistical System for collecting, compiling and disseminating relevant and reliable official statistics for policy making and to promote their usage at the State/District and Block levels.

The project has been designed to support State/UT specific interventions appropriately, in the following areas:

- Improving the coordination and management of statistical activities in the State/UTs.
- Human Resource Development
- Developing Statistical Infrastructure
- Investing in physical infrastructure, including Information and Technology, and
- Improving statistical operations, especially those supporting the cause of improvement in the quality and dissemination of statistical data.
- “India Statistical Strengthening Project (ISSP) has been renamed as “Support for Statistical Strengthening (SSS)”, which is now a Central Sector Scheme.

The main objectives of the Scheme are:

- a) To strengthen the Statistical System of the States and Union Territories (UTs) of the Union of India.
- b) To ensure to improve the coverage, quality, timeliness and credibility of 20 key Statistical Indicators.

The Director and the Joint Director attended the review meeting at CSO, MoSPI, New Delhi on 22nd and 23rd February, 2017 to finalize the work plan and plan of activities to be carried out under the same. Accordingly, statistical activities have been prepared in consultation with SSS unit of MoSPI which are proposed to be undertaken.

EVALUATION CELL

Plan formulation, Plan Implementation and Plan Evaluation form a sequence of planning process. Evaluation results provide the required input for assessing the performance capacity using the information as guide for improved policy/programme/project planning. End-line survey for Election Department on knowledge, attitude and practice of citizens in the U.T. of

Puducherry was undertaken during the year 2016-17 and report was submitted.

PUBLICATION

The Publication section of this Directorate is in-charge of collection, compilation, analysis and presentation of the data in the Statistical Publications (1) Puducherry at a Glance (2) Abstract of Statistics and (3) Statistical Handbook issued by the Directorate. To make the publications user friendly, a set of illustrative charts have also been incorporated in the publication.



Release of Publications by Hon'ble Minister for Statistics, Government of Puducherry

During 2016-17, the following publications were brought out by this Directorate.

- 1) Annual Report - 2015-16
- 2) Monthly Price Bulletin upto February 2017
- 3) Budget in Brief – 2015-16
- 4) Puducherry at a Glance 2016
- 5) Report on Endline Survey on KAP for Election Department
- 6) Season and Crop Report 2015-16
- 7) Census of Govt. Employees 2015-16



Release of Publications by Shri.D.Manikandan, I.A.S., Secretary to Government of Puducherry (Statistics)

ECONOMIC CENSUS:

The VI Economic Census field survey was completed in all regions of the UT. The Census was carried out in the entire UT, covering all economic activities other than crop production. Basic information on location of economic activities, description of various economic activities, nature of operation, type of ownership, social group of owner etc were collected. The report on 6th Economic Census was brought and uploaded in this Directorate's website.

COMPUTER CENTRE

DES has a full-fledged computer unit which is utilized by all sections of the Directorate for storage, retrieval and generation of various reports. Over the years, the Computer Centre has undertaken computing jobs for processing voluminous data varying widely in structure and content. It has shouldered the responsibility of processing the various Census data such as Economic Census, Livestock Census etc, data of various adhoc surveys conducted by the DES. Apart from sponsoring the officials for various

computer training programmes conducted by the CSO, the officials were given proper training in office automation also.

Web Board has been constituted for periodical management of the website of the Directorate of Economics and Statistics with the Joint Director (I) as Web Master. The Web Board functions under the over all supervision of the Director.

Statistical System of the U.T has already been modernized via Computer in the matter of rapid collection of data and quick tabulation and analysis. Computing resources of the Directorate were strengthened by proper maintenance and upgradation of computer systems and accessories in the DES. Hence, up-to-date data is available in the digital format maintained by the Directorate.

A dedicated website for DES, Puducherry has been designed with the help of NIC, Puducherry and hosted through National Portal viz., <http://statistics.puducherry.gov.in>. DES has also obtained VPN access through NIC, Puducherry for content updating directly from DES. The statistical information and the publications are available in the official Website of DES <http://www.statistics.puducherry.gov.in>

CELEBRATION OF “STATISTICS DAY”

In recognition of the notable contribution made by (late) Prof. Prasanta Chandra Mahalanobis in the fields of planning and statistical development in the post-independent era, the Government of India has declared 29th June of every year as the National Statistics Day, coinciding with the birth anniversary of late Prof. P.C. Mahalanobis. The objective of this day is to create awareness among the people especially the younger generations for drawing inspiration from (late) Prof. Mahalanobis about the importance of statistics in socio-economic planning and policy formulations.



Celebration of 10th National Statistics Day on 29-06-2016. From Left :Dr. J Jasmine, Professor and HOD, Dept. of Statistics, Bharadhidasan Arts & Science College, Puducherry, Dr. R Ramakrishnan, Joint Director of DES, Shri. R Parthasarathi, Deputy Director of DES and Dr. SVaittianadane, Director of DES, Puducherry

The Directorate of Economics and Statistics, Puducherry celebrates Statistics Day on 29th June every year. The seventh Statistics Day was celebrated by DES on 29th June 2016 and publications were brought out by Hon'ble Minister for Statistics, Government of Puducherry.

COMMITTEES

To bring out an effective co-ordination/co-operation between the DES and other Departments, Co-ordination Committees have been constituted.

1. A High-Level Co-ordination Committee for Improvement of Crop Statistics has been formed with Secretary (Economics and Statistics) as Chairman and Director, DES as Member Secretary. The Committee meets once in a year.
2. State Level Co-ordination Committee on ASI was reconstituted in 2009 with Secretary to Government (Economics and Statistics) as its Chairman / Chairperson Meeting of the Committee is convened once in two years.

3. High Powered Price Monitoring Cell for the U.T of Puducherry was constituted in 2000 with the Secretary (Economics and Statistics) as the Chairman. Director, DES is a member of the Cell and the meeting of the Cell is conducted every year.
4. A Steering Committee has been formed as directed by the Economic Census Division, Central Statistical Organisation, New Delhi with the Secretary (Economics and Statistics) as Chairman and Census Commissioner and the Director, DES as Additional Census Commissioner for the conduct of Economic Census.
5. State Co-ordination Committee for Monitoring and Co-ordinating the work related to Agriculture Census in the Union Territory of Puducherry was constituted as directed by the Ministry of Agriculture, Government of India, New Delhi with Secretary (Economics and Statistics) as Chairman. Further Secretary (Economics and Statistics) is the State Agriculture Census Commissioner for the conduct of the Agriculture Census, a Centrally Sponsored Scheme implemented by the Department of Agriculture and Co-operation, Ministry of Agriculture, Government of India.
6. A State Level Task Force Committee for updation and uploading of State Gazetteer has been constituted vide G.O.Ms. No. 40/F2/2010 dated 22.09.2010
7. A State High-level Steering Committee has been constituted to monitor the Project ISSP in the U.T. of Puducherry with the Chief Secretary as Chairman and the Secretary (Eco & Stat), as Co-Chairman, and the Director (Statistics) as Member Secretary, Representatives from the Pondicherry University and Representative of the Ministry of Statistics and Programme Implementation, Representative of the National Sample survey

Organisation are included as members for the purposes of ISSP vide G.O.Ms. No. 52/F2/2010 dated 01.11.2010.

**DETAILS OF WORKSHOP / DISCUSSION / CONFERENCE / TRAINING
CONDUCTED BY THIS DIRECTORATE DURING 2016-17**

Sl. No.	Title of the Meeting/Discussion/ Training / Workshop/ Conference	Duration
1	Refresher Training Programme on Crop Estimation Survey	21 & 22-07-2016
2	Endline Survey on Knowledge, Attitude & Practice of citizens	08-08-2016
3	6 th Annual Employment Unemployment Survey	11-08-2016
4	Training on Agriculture Census – Preparing L1 & L2 (Karaikal Region)	17-08-2016
5	Training on Agriculture Census – Preparing L1 & L2 (Villianur Taluk, Puducherry Region)	22-08-2016
6	Training on Agriculture Census – Preparing L1 & L2 (Bahour Taluk, Puducherry Region)	23-08-2016
7	Training on Agriculture Census – Preparing L1 & L2 (Puducherry & Oulgaret Taluks, Puducherry Region)	24-08-2016
8	Training on Agriculture Census – Preparing L1 & L2 (Mahe Region)	26-08-2016
9	Training on Agriculture Census – Preparing L1 & L2 (Yanam Region)	31-08-2016
10	74 th Round of NSS – Phase II – Establishment Focused Survey of Service Sector	15-03-2017

Right to Information Act :-

Under the Right to Information Act 2005, 17 manuals have been prepared and Web-hosted. DES consists of three regional offices at Karaikal, Mahe and Yanam and the details of Public Information Officers appointed for dealing with RTI Act in DES are as follows: -

Joint Director I	: Public Information Officer (Puducherry Region)
Joint Director II	: Transparency Officer
Joint Director III	: Public Information Officer (Mahe and Yanam Regions)
Deputy Director I	: Assistant Public Information Officer (Puducherry Region) and
Deputy Director (Karaikal)	: Public Information Officer (Karaikal Region)

Under the Right to Information Act, DES received a total number of 15 applications during the year 2016-17 and 11 applications were disposed and 4 applications were forwarded to the Public Information Officer concerned of other Departments. There are no cases of information denial during the year 2016-17. A display board incorporating the names of PIOs and Appellate Authority has also been kept in the premises of the DES, Puducherry. Quarterly reports (up to March 2017) have been uploaded in the web portal of Central Information Commission, New Delhi. A Monthly report is also uploaded in the website of the Directorate as per the instructions of the Ministry of Home Affairs, New Delhi.

Director, DES has been appointed as the Nodal Officer for uploading RTI returns of all Government Departments. The website is regularly monitored and updated in co-ordination with the departments concerned.

CITIZEN CHARTER

Citizen charter for the DES has been prepared and uploaded in the Website of this Directorate <http://www.statistics.puducherry.gov.in>

STATISTICAL PUBLICATIONS

In recent years, there is a growing need for Statistics on all Socio-Economic aspects of the State and also for presentation of such statistics in a meaningful framework. The effectiveness of the Statistical System in a State depends upon the efficiency in the collection and compilation of statistics with high standard of reliability and making them available to users in time. Hence, the Directorate has enlarged its activities not only to

cater to the needs but also to stimulate wider user fields. Directorate is making consistent efforts to gain the respect and confidence of Politicians, Bureaucrats and the Public by presenting up-to-date validated statistical data in the publications. The Publications of the Directorate also aim at providing important statistics which are generally required for economic analysis.

ABSTRACT OF STATISTICS (ANNUAL)

It is the most comprehensive publication of the DES and serves as an important source material for statistical time series data of different aspects of the Union Territory of Puducherry. The Publication gives region-specific micro-level data on Area and Population, Rainfall, Agriculture, Livestock, Fisheries, Industries, Power, U.T Budgetary details, Finance and Banking, Co-operative Societies, Joint Stock Companies, Social Welfare, Tourism, Insurance, Prices, State Domestic Product, Police and Crime, Education, Public Health & Vital Statistics, Housing & Five-Year Plans.

ANNUAL SURVEY OF INDUSTRIES (ANNUAL)

The ASI report presents data on salient characteristics of industries like extent of investment, employment, input, output, labour cost, value added etc., and gives a descriptive account of the industrial structure of the U.T. of Puducherry. The ASI data provides statistical information to assess and evaluate objectively and realistically the changes in the growth, composition and structure of the organized industrial sector. It also provides comprehensive, factual and systematic basis for formulation of industrial policy. It gives the contribution of the organized industrial sector to the State Domestic Products of the U.T. of Puducherry.

BUDGET IN BRIEF (ANNUAL)

The publication presents the Budgetary details in a simple form and vividly brings out the fiscal activities of the State highlighting the comparative growth in the Revenue receipts and Expenditure of the State.

BUDGET AN ECONOMIC-CUM-PURPOSE CLASSIFICATION (ANNUAL)

Various items of Revenue and Expenditure of the State regrouped and reclassified into meaningful economic categories to facilitate better understanding of the economic aspects of Government transactions are presented in the publication.

CENSUS OF GOVERNMENT EMPLOYEES (ANNUAL)

The Report contains statistics on Employees of Puducherry State Government / Central Government / Local Bodies and Autonomous Institutions and helps to assess the volume of employment and related information in the Public Sector.

ECONOMIC CENSUS (QUINQUENNIAL)

Economic Census provides up dated information on number of establishment and number of persons employed therein, activities wise, of all the sectors (excluding crop production, plantation, public administration, defense and compulsory social security) of the country including their distribution at all-India, State, district, and at village/ward levels for comprehensive analysis of the structure of the economy (micro, macro and regional levels) for economic planning and policy formulation.

INDEX NUMBER OF INDUSTRIAL PRODUCTION (ANNUAL)

Index of Industrial Production prepared and published annually by the DES is the most up-to-date indicator of industrial growth of the U.T. of Puducherry. It is also used by the Planners for framing policies and programmes.

PUDUCHERRY AT A GLANCE (ANNUAL)

This publication presents the selected Statistical data covering the important selected socio-economic aspects of the U.T. of Puducherry.

PRICE TREND

Price Statistics published by the DES is an important publication pertaining to the economy. The price data utilised by official agencies can be divided into two broad categories, viz,

- i) Regulatory uses and
- ii) Statistical uses.

A regulatory use includes, planning, policy making and administrative control and the Statistical use comprises construction of price indices, framing estimates of National Income and analytical studies. Data on prices of agricultural commodities is needed by the Government generally for policy making and administrative purposes and by the traders for their sale/purchase business. The Government needs price data, not only for the formulation of current policy but also for the assessment of progress in the implementation of these policies and plans.

REPORT ON AGRICULTURE CENSUS (QUINOUENNIAL)

The report presents information on Land holdings, land utilisation, irrigation, crops and changes in the structure of agriculture such as size, distribution of holdings, tenancy and agricultural resources. It provides benchmark data needed for formulating agricultural development programmes and for evaluating the progress. It also provides the basic frame of operational holdings for carrying out future agricultural surveys. The data collected through the Census forms the basis for developing an integrated programme for agricultural development and basis for the Government to frame necessary policies and programmes for the benefit of landholders in general and small and marginal landholders in particular.

REPORT ON INPUT SURVEY (QUINOUENNIAL)

The report presents data regarding inputs like improved seeds, fertilizers, pesticides and information on livestock, agricultural machinery, organic manure, institutional credit taken for cultivation etc.

SEASON AND CROP REPORT (ANNUAL)

This report presents data on land use, cropping pattern, productivity, irrigation, agricultural wages etc. The data given in the report are of immense use to Planners, Policy makers, traders etc. The Ministry of Agriculture require these details for taking decision on pricing, procurement, export, import etc., at National level.

STATISTICAL HAND BOOK (ANNUAL)

This Publication gives the factual account of Socio economic indicators of the U.T. of Puducherry based on statistics currently available on various sectors of the State Economy at macro level.

STATE DOMESTIC PRODUCT (ANNUAL)

The Report gives detailed information regarding the State Domestic Product and Per capita Income of the Union Territory of Puducherry both at current and constant prices. The estimates presented in the Publication depict a dynamic picture of the economic structure of the State.

USER ORGANISATIONS

Central / State Government Departments / Ministries at the Centre / NITI AAYOG/ Finance Commission/ Ministry of Agriculture and Co-operation/Ministry of Industries/ Labour Bureau, Shimla / Development Commissioner for SSI/Central Government Organisations/ RBI /Lead Bank /National Bank for Agriculture and Rural Development/Non-official Agencies/Academic Bodies/Research Scholars/Economists /Entrepreneurs.

ACTIVITIES OF THE STATISTICAL CELLS IN MAJOR DEPARTMENTS

INTRODUCTION

Apart from the Directorate, Statistical Cells are functioning in various Departments/Agencies to look after their statistical requirements. Brief description of activities in various Departments is given below:

AGRICULTURE

The Statistical Cell in the Directorate of Agriculture comprises of one Statistical Officer, one Statistical Inspector and nine Field Supervisors in Puducherry and one Statistical Inspector and three Field Supervisors in the Office of the Karaikal region. The Cell is responsible for collection of Agricultural Statistics under various schemes operated by the Department. It conducts periodically the crop estimation survey on paddy, groundnut, sugarcane etc., in order to estimate the production. Weekly, monthly, quarterly, and annual reports on agriculture are also prepared and submitted to the Government of India from time to time. Preparation of reports/statements under Plan schemes operated by the Department is also done by the Cell.

ANIMAL HUSBANDRY

A full fledged statistical unit functions in the Animal Husbandry Department under the charge of Deputy Director (Statistics). He is assisted by one Statistical Officer, one Statistical Inspector and four primary enumerators (Field Supervisor). One Statistical Inspector and two primary Enumerators (Field Supervisor) are working in the Regional Office, Karaikal. The Cell is mainly engaged in the conduct of integrated sample survey for the estimation of production of major livestock products. The survey is conducted every year and data on milk and egg production are collected. The data on the estimates of production are compiled and analysed and forwarded to the Government of India. The details of number of animals slaughtered, average quantity of meat obtained per animal and poultry meat production are also collected by the Cell through surveys. Apart from the above, the Cell also collects the retail prices of various feeds and livestock products and details of milk procured by the Co-operative Milk Societies and furnishes them to the Government Agencies as and when required. It is also undertaking quinquennial livestock Census.

The following reports are also prepared by the Cell: -

1. Fortnightly report on the important developmental activities of the Department.
2. Annual Administration Report of the Department.
3. Data on socio-economic indicators pertaining to Animal Husbandry Department.

EDUCATION

A Statistical Cell, comprising of one Statistical officer, four Statistical Inspectors and two Field Supervisors functions in the Directorate of Education, Puducherry. The Cell is primarily engaged in the collection, compilation, tabulation of primary data relating to educational activities being carried out in the State. Reports containing the data on the list of educational institutions, enrolment of students in schools, strength of teaching and non-teaching staff, infrastructure facilities available in schools, statistical tables consisting data on students strength - stage-wise, gross enrolment ratio, teacher-pupil ratio etc., are also prepared by the Cell. Periodical returns are prepared for onward transmission to the Ministry of Education for incorporation in the Publication "Statistics of Education in States". An Annual Report of numerical and financial data of school level education and higher education and examination results are furnished to the Ministry of Human Resources Development.

HEALTH

The Statistical cell, of the Health Department has a Deputy Director as its Head, with three Statistical Officers, six Statistical Inspectors, and four Field Supervisors. Apart from this, three Statistical Officers, one Statistical Inspector, and two Field Supervisors are working in the Offices of the outlying regions. The main functions of the Cell are as follows.

1. Furnishing of reports on Health and Family welfare programmes to Ministry/ Directorate General of Health Services, New Delhi.
2. Preparation of materials for the Conference, Meetings - Annual Plan and Five-Year Plan discussions.
3. Constitution of State / District level committees / societies for the implementation of various Health & Family Welfare Programmes.

4. Release of advertisement in News papers/magazines regarding Health and Family Welfare achievements and activities.
5. Monthly periodical review of progress of all programmes.
6. Matters related to pulse polio programme.
7. Preparation of Annual Report - Assembly / Parliament questions related to Health care programmes and follow up actions.
8. Issuing of instructions/circular to the Programme Officers/Health Institutions to take preventive measures to avert the possibility of any out break of diseases.
9. Preparation of monthly report on family welfare and immunization and quarterly report on rural health schemes, and Annual Report on FWP.
10. Consolidation of the statistical particulars in respect of PHC/CHC/District hospital for onward transmission to Government of India.
11. Preparation of quarterly report on a) post partum programme b) FWP c) RCH programmes and furnish the same to the Government of India.
12. Furnishing of particulars for Family Year Book brought out by the Government of India.
13. Preparation of District Action Plan/State Action plan.
14. Preparation of weekly, monthly, annual reports regarding UIP programme.
15. Preparation of monthly report on cholera/gastroenteritis and morbidity and mortality due to diarrhea.
16. Evaluation of the UIP programme.
17. Assisting the Deputy Director (Health) and Surveillance Medical Officers for conducting training for re-orientation of AFP cases and correspondence work in connection with AFP cases.
18. Preparation of weekly/quarterly report regarding surveillance of acute flaccid paralysis.
19. Assist the Deputy Director (Health) in the conduct of PPI/IPPI and
20. Preparation of monthly report on communicable diseases and furnishing of the same to Government of India.

INDUSTRIES

Statistical Section comprises of one Statistical Inspector and three Field Supervisors.

1. Implementation of the Centrally Sponsored Scheme “Collection of data on SSI in Puducherry”
2. Conduct of sample survey on Small Scale Industries.
3. Conduct of diagnostic survey on Small Scale Sick Industrial units.
4. Preparation of the publication “Compendium on Industrial Statistics” and “Industrial Directory”.
5. Conduct of comprehensive survey on the development activities of the Industries.
6. Frame List Entry i.e., the details of all the permanently registered units in a year such as the product, amount of Investment in plant and machinery, employment and plant capacity have to be entered as per the frame list furnished by the Office of the Development Commissioner, SSI, New Delhi and
7. Submission of quarterly/ monthly/ fortnightly progress report to the Government of India.

LOCAL ADMINISTRATION

A Statistical Cell functions in LAD under the charge of the Deputy Director (Vital Statistics), with one Statistical Officer and two Statistical Inspectors. The LAD functions in the UT of Puducherry as the Office of Chief Registrar of Births and Deaths and Deputy Director (Vital Statistics) is the Additional District Registrar of Births and Deaths. Report on Registration of Birth and Death Act is prepared by the Cell for onward transmission to the Registrar General of India, New Delhi. The Cell functions in accordance with the provisions of Registration of Births and Deaths Act 1969. Co-ordination in the matter of registration and collection of vital statistics is maintained by the Cell with the Municipalities. The cell is also responsible for propagating the importance of registering the births and deaths at various places and for making suitable arrangements for the same. It also conducts annual inspection of Civil Registration Centre in the Union Territory of Puducherry

and convene the committee on vital statistics periodically. The Cell is primarily engaged in the collection, compilation and analysis of the data relating to vital statistics. Apart from the above, the Cell also brings out an Annual Administration Report of the Commune Panchayats. It also collects and compiles information on statistics relating to local bodies and furnishes the same to the various Government agencies viz., road statistics, health statistics and Accounts etc.,

PUBLIC WORKS

The Statistical Cell in the Public Works Department comprises of one Deputy Director called as Research Officer and one Statistical Inspector. The main functions are as follows:

1. Furnishing of monthly progress report on National High Ways on E & I schemes to the Ministry of Surface Transport, New Delhi.
2. Quarterly progress Report on minor irrigation to Ministry of water Resources, New Delhi.
3. Preparation of progress report on Basic Minimum Services, all Plan schemes, all civil works costing more than one crore & Rural Water Supply.
4. Reports on all on going works are also prepared and sent to Govt. of India, New Delhi, and Secretary (Works), Govt. of Puducherry.
5. Intensive Examination reports on materials procured from Central Government, Progress report is also sent to the Vigilance office, Puducherry.
6. Preparation of progress Report on road statistics,
7. Undertaking Minor irrigation census periodically.

SOCIAL WELFARE

The Statistical Cell headed by a Deputy Director called as Research Officer consists of one Statistical Officer and two Statistical Inspectors. The main functions of the statistical cell are as follows:

1. Evaluation and Monitoring of schemes.
2. Preparation and submission of periodical reports to the Government of India.
3. Works relating to the position of minorities in the U.T.

TOWN AND COUNTRY PLANNING

The Statistical Cell consists of one Statistical Officer.

1. Collection, analysis and submission of secondary data to the Head of Department for preparation of Development Plans for the Urban and Rural settlements in the U.T of Puducherry
2. Preparation of Annual Plan proposals, work related to allocation/re-allocation of funds under various Housing & Urban development schemes implemented by the Department and
3. Monitoring and reporting work related to Land Acquisition.

WOMEN AND CHILD DEVELOPMENT

In the Department of Women and Child Development, five Statistical Inspectors in Puducherry region and one Statistical Inspector in the Office of the Karaikal region are working in the ICDS projects. The main function is to collect the statistical data regarding the centrally sponsored ICDS from the zones, consolidate and furnish the progress reports to the Government of India regularly on monthly, quarterly, half-yearly and annual basis. Apart from this, various other data regarding the activities of the Department are furnished to the agencies concerned as and when required by them.



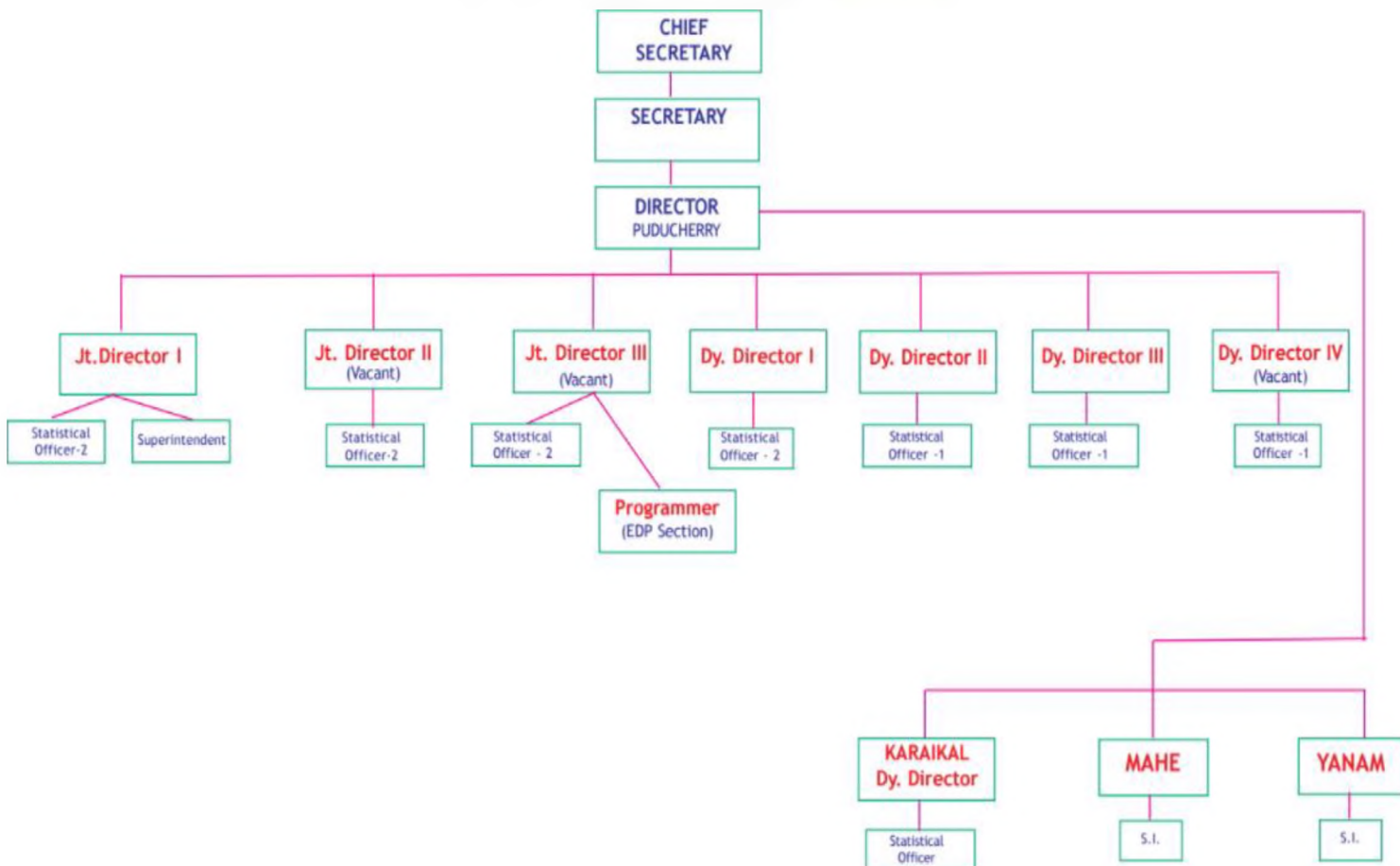
ANNEXURE - I**DIRECTORATE OF ECONOMICS AND STATISTICS
ROLL OF DIRECTORS**

Sl. No.	Name of the Officer (Tvl.)	From	To
1	AJAIB SINGH	AUGUST-1957	AUGUST-1963
2	MUTHUBASAVAN S	AUGUST-1963	NOVEMBER-1969
3	SUBBARAYALU V	DECEMBER-1969	FEBRUARY-1972
4	MUTHUBASAVAN S	MARCH-1972	MAY-1989
5	SUBBARAYALU V	JUNE-1989	SEPTEMBER-1991
6	ALBERT A R	OCTOBER-1991	JULY-1992
7	BRITTO G	JULY-1992	OCTOBER-1992
8	ALBERT A R	NOVEMBER -1992	AUGUST-1993
9	KRISHNA RAAJ S	SEPTEMBER-1993	DECEMBER-1993
10	SAMINATHAN S	JANUARY-1994	AUGUST-1994
11	KRISHNA MURTHY K S	SEPTEMBER-1994	SEPTEMBER-1996
12	VAITTIANADANE S	NOVEMBER -1996	OCTOBER-1997
13	KANAGASABAI S	NOVEMBER -1997	OCTOBER-2000
14	Dr. VAITTIANADANE S	OCTOBER-2000	June-2017
15	Dr. RAMAKRISHNAN R	JULY-2017	Till Date

ANNEXURE - II

ORGANISATION CHART

**ORGANISATION CHART
DIRECTORATE OF ECONOMICS AND STATISTICS**





Officers / Staff Associated

Dr. R. RAMAKRISHNAN
Joint Director

Shri. R. PARTHASARATHY
Deputy Director

Shri. S. RATHINAVELU
Statistical Officer

and

Shri. V. MOHANKUMAR
Statistical Inspector